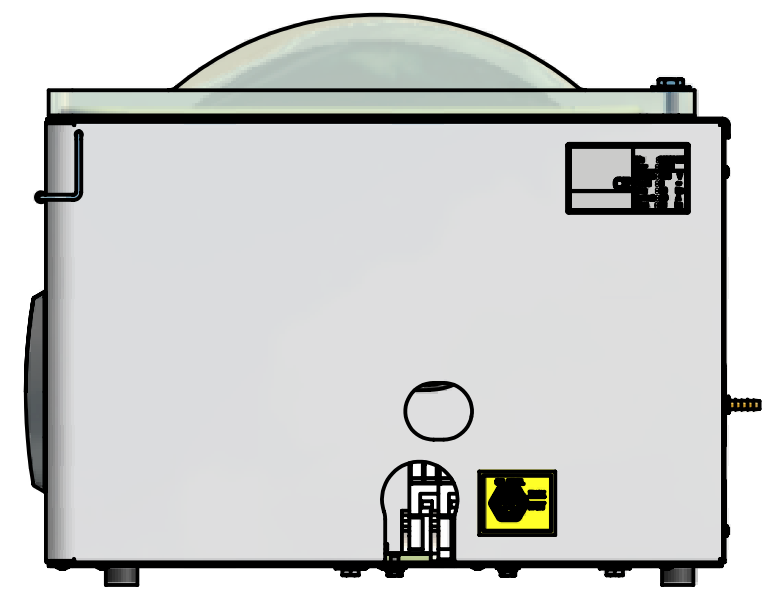
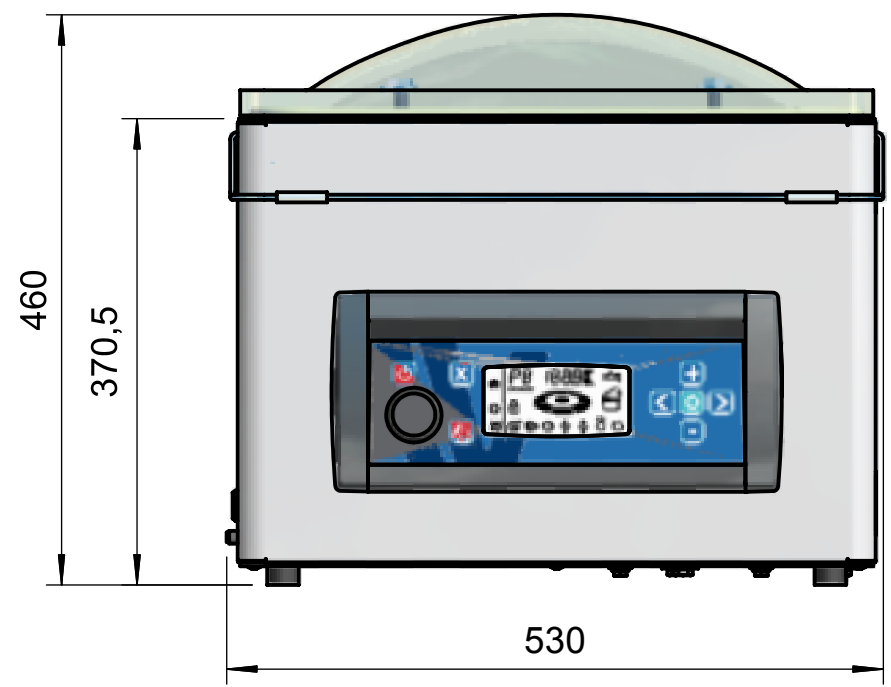
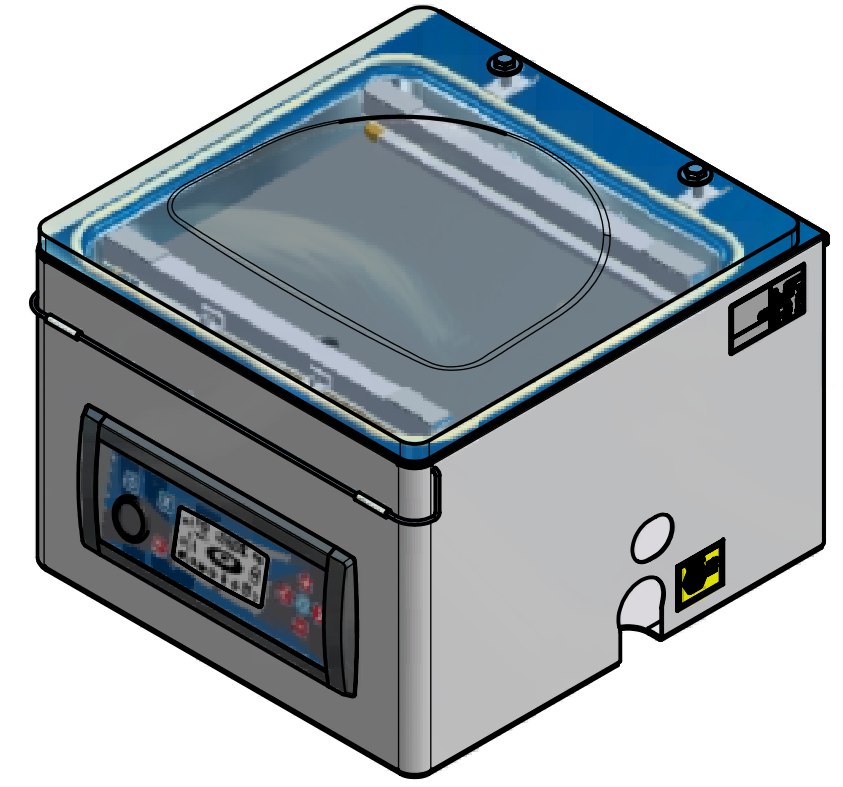
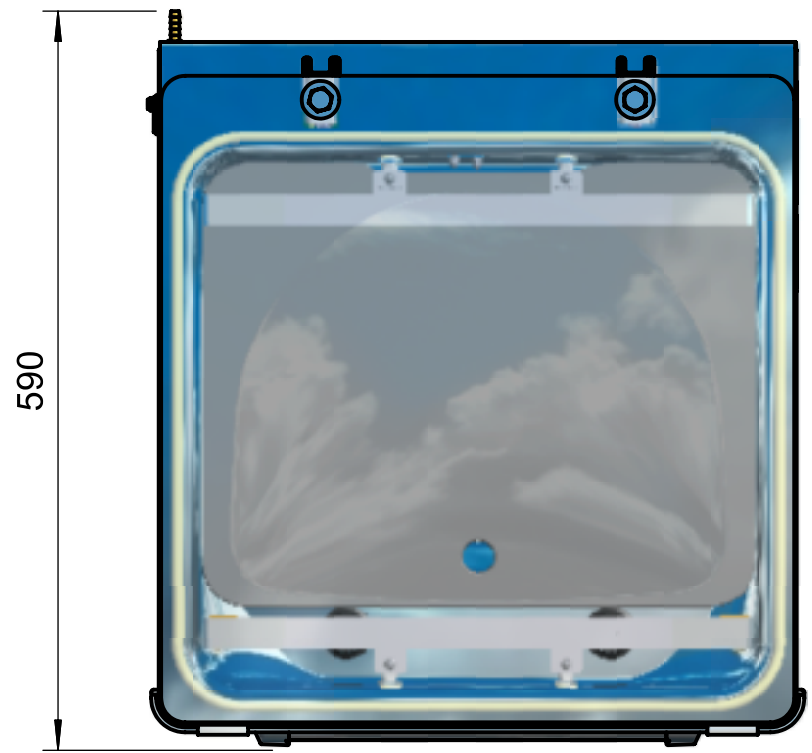


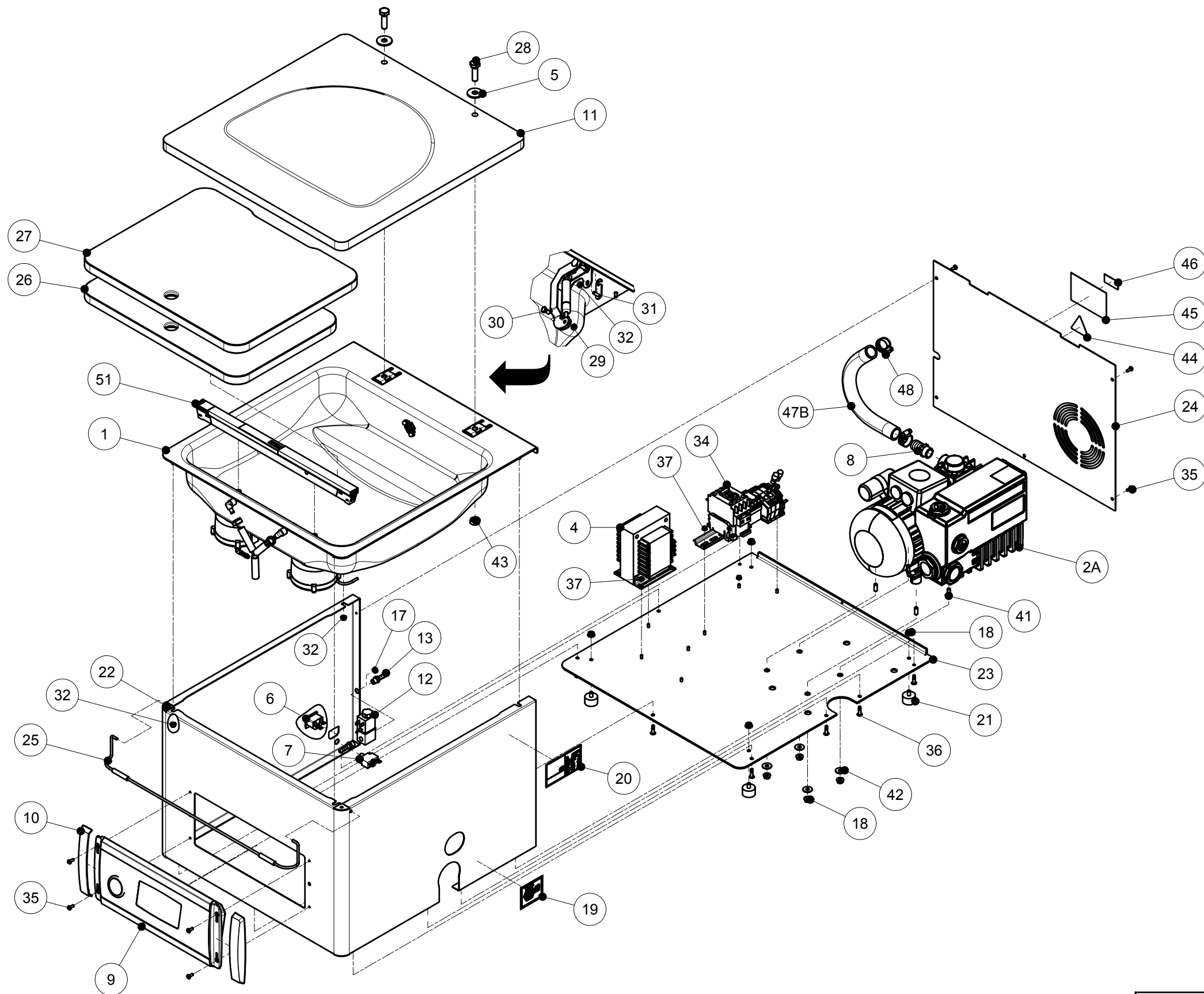
Ownership explicitly reserved to HFE vacuum systems b.v. Multiplication in any form to third parties is not permitted without written permission of the owner.



REV	DATE	DESCRIPTION
REVISION HISTORY		

ALL DIMENSIONS IN mm TOLERANCE: According to DIN ISO 2768 Part 1-m and Part 2-K		DRAWN: P.S.	MAT :
FORMAT: Oct 2008		DATE : 14-6-2012	DIM :
NAME T4 Machine		CHECK :	FINISH:
		REPLACED BY	REPLACES
HFE VACUUM SYSTEMS PO Box 2261 5202 CG 's-Hertogenbosch Netherlands Phone: +31 (0)73 6 271 271 Fax: +31 (0)73 6 271 200		SCALE	FORM
			A3
		REV	ART. NR
			DRW. NR
			SHEET NR
			13130-1

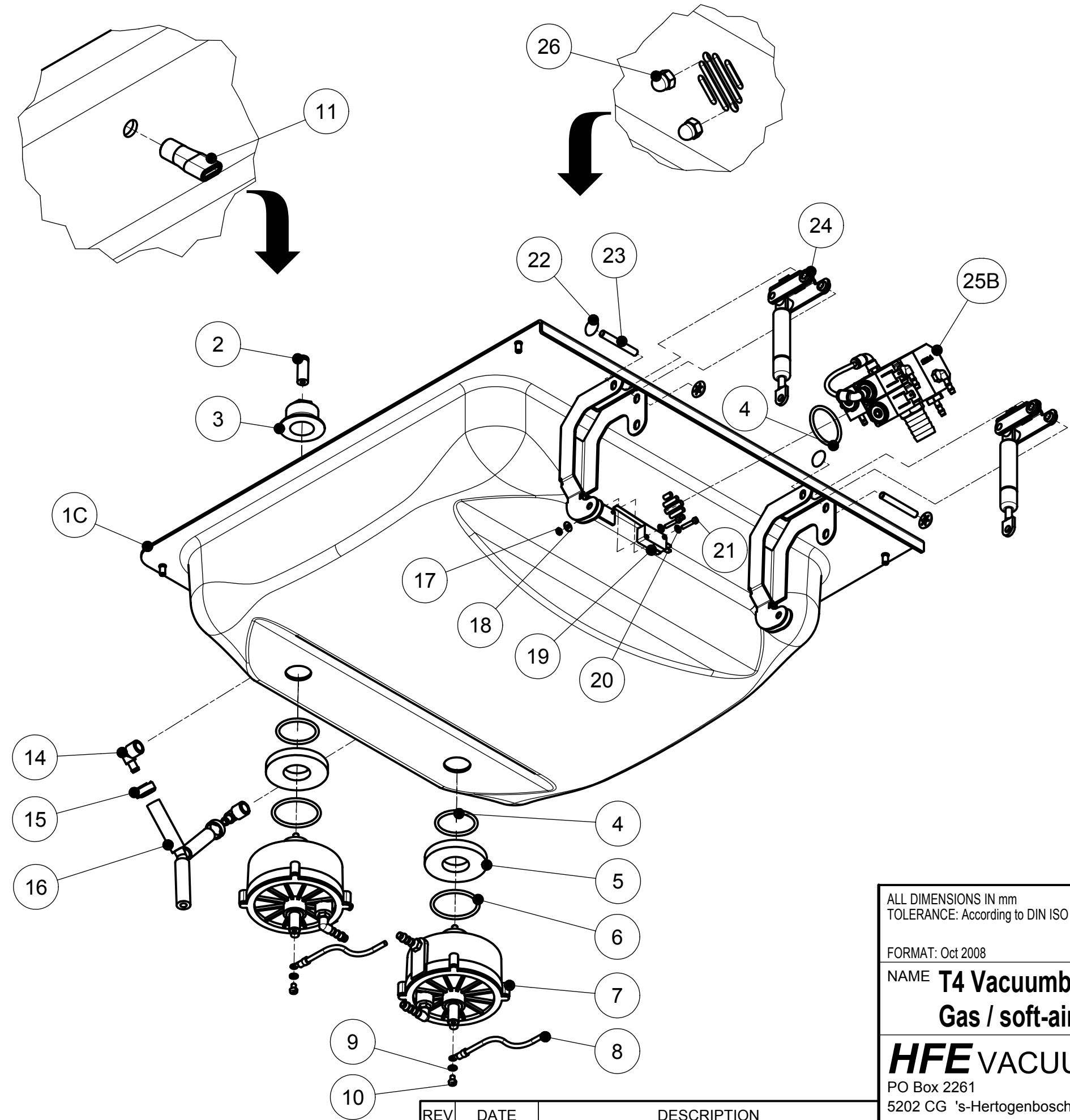
Ownership explicitly reserved to HFE vacuum systems b.v. Multiplication in any form to third parties is not permitted without written permission of the owner.



POS	ART. NR	DESCRIPTION	DRW. NR	R
1		T4 Vacuumbak	13131	
2A	0300.016--	Pomp 016		
2B	03.01.0----	Pomp 021		
4	11.05.0.0450	COMBI-TRAFO P100/230V-S16/24V		
5	01.21.1.0060	Washer M10		
6	1100.29000	NET ENTREE Male Snap-in STF42		
7A	1100.23010	Thermische zekering 6A		
7B	1100.23015	Thermische zekering 8A		
7C	1100.23000	Thermische zekering 10A		
8	0206.00050	Slangpilaar G1-2x19mm Bu		
9		Assembly 04 besturing	13910	
10	1218.00035	Cap small Holder 04-control		
11	A4>T4----	T4 Vacuumcover	13132	
12	03.02.0.0140A	2/2-Valve Gas 24VAC		
13	02.04.3.0010	Slangpilaar 1/8"x6mm Bu MS		
14	02.02.3.0020	T-stuk G 1 8 bi		
15	02.03.3.0010	Knie " BI/BU		
16	02.06.3.0130	Nippel bu bu G 1 8		
17	11.49.0.0030	Elma afdeknop 040-3020 zwart		
18	01.13.0.0010	Hex Flange Nut DIN 6923 - M6		
19	96.03.2.0460	Sticker oliepeil 021		
20	96.03.2.0398	Machinesticker 97 x 55 zilver		
21	1602.00015	Trildemper d=25 h=17 M6x10 uitw		
22	0901.10075	T4 Omkasting		
23	0903.10075	T4 Bodemplaat		
24	0902.10075	T4 Achterwand		
25	1701.00040	T4 Dekselsluiting		
26	1201.04030	T4 Inlegplaat onder		
27	1201.04035	T4 Inlegplaat boven		
28	0102.10035	M10x35 Hex-Head Bolt DIN 933		
29	01.12.1.0040	M6 Hex Nut DIN 985		
30	01.02.1.4012	M6x12 Hex-Head Bolt DIN 933		
31	0400.00255	Scharnier afstelplaat 6mm as		
32	01.13.0.0000	M5 Hex Nut DIN 6923		
34A	1103.20120	DIN RAIL C 1fase (1-PROGRAM)	13092	
34B	1103.20130	DIN RAIL E 1fase	13094	
34C	1103.20125	DIN RAIL D 1fase	13093	A
35	01.09.1.0030	M4x10 Cross recessed raised cheese head screws DIN 7985		
36	0199.00015	Hucknagel MAGNA-LOK MGLP-B6-4		
37	01.13.0.0020	M4 Hex Nut DIN 6923		
39	01.21.1.0050	Washer M8 DIN 9021		
40	01.02.1.5010	M8x10 Hex-Head Bolt DIN 933		
41	01.05.1.4016	M6x16 Hexagon Socket Set Screw DIN 916		
42	01.21.1.0040	Washer M6		
43	01.10.1.0060	M10 Hex Nut DIN 934		
44	96.03.2.1090	Sticker spanning driehoek		
45	96.03.2.1110	Sticker 98 x 65 geel		
46	96.03.2.1100	Sticker 19x38 geel		
47A	1802.00080	T4-21m² Pompslang		
47B	1802.00075	T4-16m² Pompslang		
48	02.01.2.0080	Slangklem ABA 15-24mm		
51A	9403.30420	Sealbak TS-3-420		
51B	9402.30420	Sealbak DS-3-420		

ALL DIMENSIONS IN mm TOLERANCE: According to DIN ISO 2768 Part 1-m and Part 2-K		DRAWN: P.S.		MAT:	
FORMAT: Oct 2008		DATE : 14-6-2012		DIM:	
NAME T4 Machine Exploded view		CHECK:		FINISH:	
HFE VACUUM SYSTEMS PO Box 2261 5202 CG 's-Hertogenbosch Netherlands Phone: +31 (0)73 6 271 271 Fax: +31 (0)73 6 271 200		SCALE 1:6		FORM A2	
		REV		ART. NR	
		REPLACED BY		REPLACES	
		DRW. NR		SHEET NR	
		13130-2			

Ownership explicitly reserved to HFE vacuum systems b.v. Multiplication in any form to third parties is not permitted without written permission of the owner.



1A	1001.10085	T4-LL Vacuumbak		
1B	1001.10080	T4 Vacuumbak		
1C	1001.10100	T4 Vacuumbak Gas		
2	0803.00010	Verlengstuk sealcilinder 27mm		
3	03.03.1.0090	Hoge moer M24X1,5 - SW20X25		
4	12.07.0.1070	O-ring 34x3 mm		
5	03.03.1.0096	Vulschijf 8mm voor sealcil. 90mm		
6	12.07.0.1100	O-ring 40x3 mm		
7	1899.00005	Sealcilinder 90mm doorl as geassembleerd		
8	1103.10025	Sealsnoer C1-12		
9	01.22.1.0020	Spring Washer DIN 127 - A 4		
10	01.06.1.2006	M4x6 Slotted Cheese Head Screw DIN 84		
11	1315.00060	Opsteeknippel 1/8"x6mm		
12	12.07.0.5010	Afdichtring G1-4		
13	02.06.03.0100	Plug 1/4"		
14	02.03.3.0090	Knie gasbuis zij montage		
15	02.01.2.0030	Slangklem KLEMFA 12.8 - 14.8		
16	1802.00095	T4 Slangenboom		
17	01.10.1.0010	M3 Hex Nut DIN 934 -		
18	01.21.1.0010	M3 Washer DIN 9021		
19	11.02.0.0620	Microschakelaar MV3000L		
20	01.20.1.0010	Washer M3 DIN 125		
21	01.06.1.1016	M3x16 Slotted Cheese Head Screw DIN 84		
22	01.23.1.0015	Asborger met kap 6mm		
23	0802.00180	Scharnieras TT-03		
24	1804.00015	Scharnierdeel T4 geassembleerd	13060	
25A	1805.00005	Combinatieventiel model-I LV geass.	13050-1	
25B	1805.00010	Combinatieventiel model-I SA/LV geass.	13050-2	
26	01.11.1.0050	M5 Hexagon Domed Cap Nuts DIN 1587		
POS	ART. NR	DESCRIPTION	DRW. NR	R

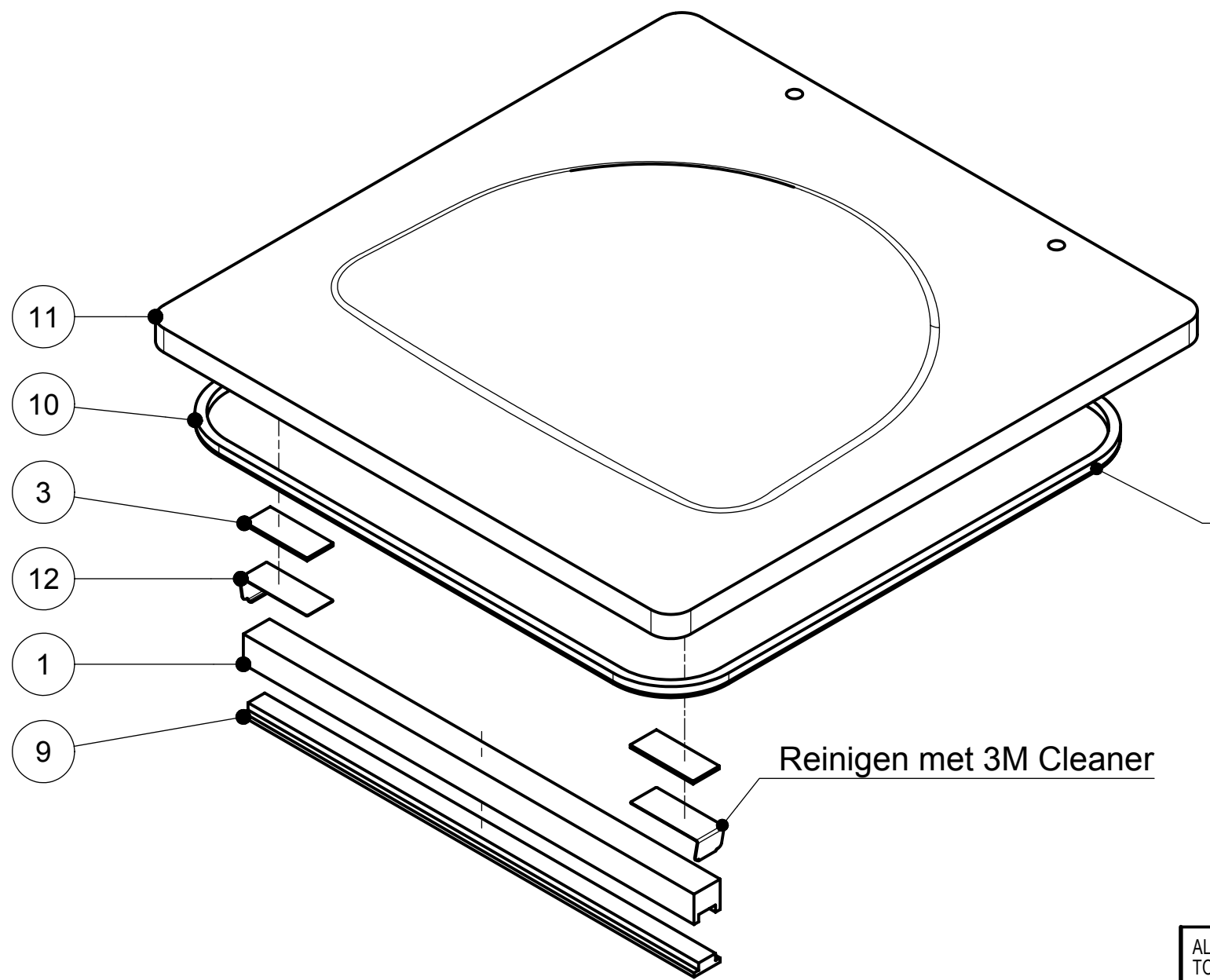
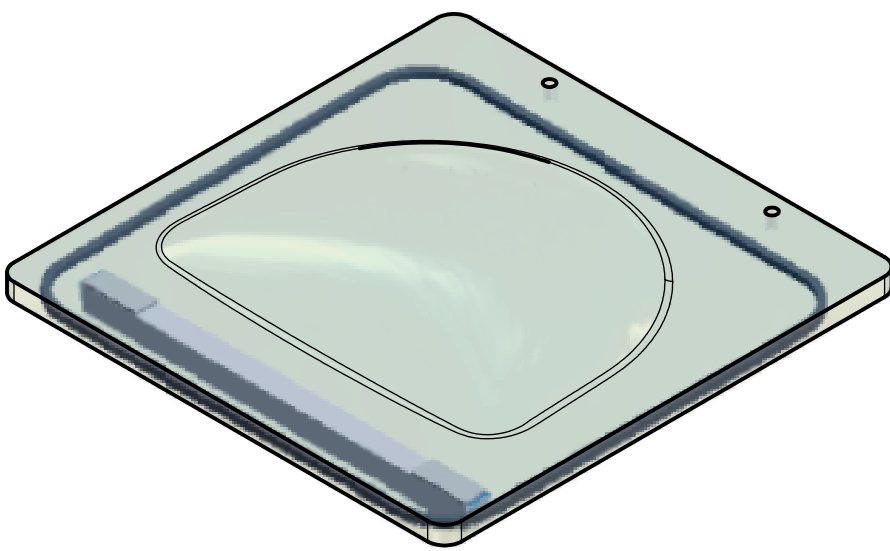
ALL DIMENSIONS IN mm
 TOLERANCE: According to DIN ISO 2768 Part 1-m and Part 2-K
 FORMAT: Oct 2008
 NAME **T4 Vacuumbak**
Gas / soft-air / less vacuum
HFE VACUUM SYSTEMS
 PO Box 2261
 5202 CG 's-Hertogenbosch Netherlands
 Phone: +31 (0)73 6 271 271
 Fax: +31 (0)73 6 271 200

DRAWN: P.S.	MAT:
DATE : 25-4-2012	DIM:
CHECK:	FINISH:
REM: art.nr: A2>T4 G/SA/LV	
REPLACED BY	REPLACES
SCALE 1:4	FORM A3
ART. NR	
REV	DRW. NR
	SHEET NR
	13131-1

REV	DATE	DESCRIPTION
REVISION HISTORY		

Ownership explicitly reserved to HFE vacuum systems b.v. Multiplication in any form to third parties is not permitted without written permission of the owner.

- Dekfels vooraf controleren op beschadigingen en bij schade/krassen afkeuren i.p.v. assembleren.
- Zorgen dat de tafel vrij is van vuil en verontreiniging om beschadigingen te voorkomen.



LET OP: Dekselrubber niet oprekken tijdens montage !!!

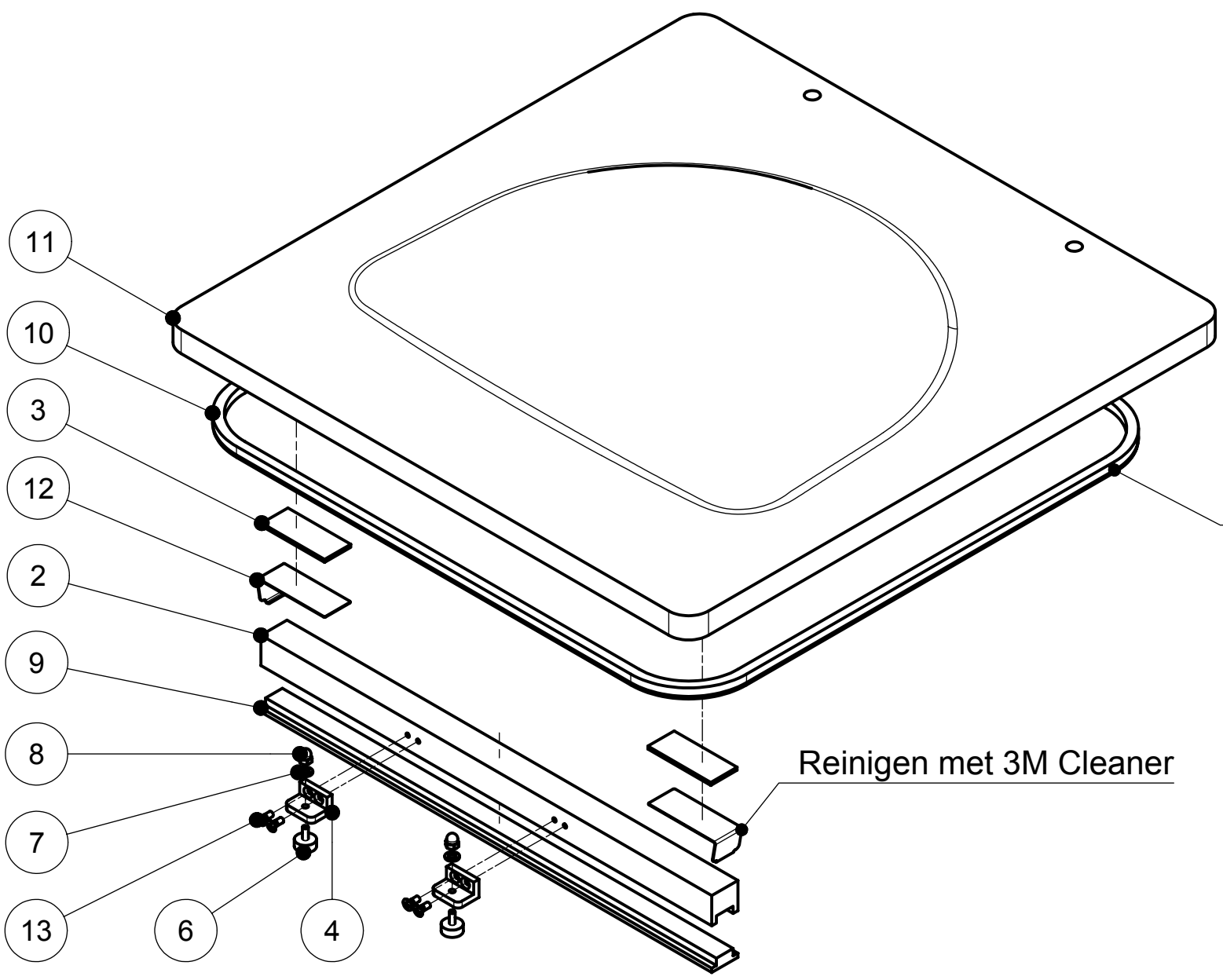
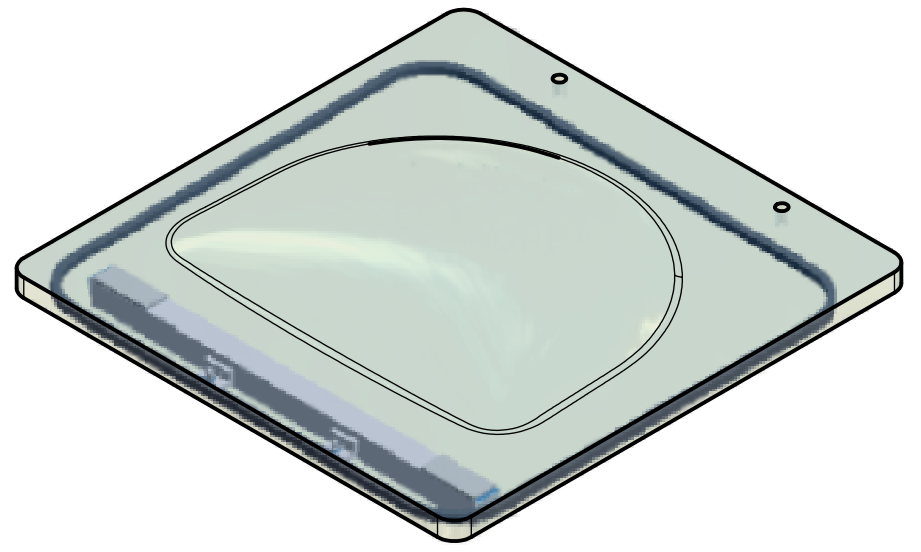
POS	ART. NR	DESCRIPTION	DIMENSIONS
1	9410.00150	Siliconenhouder T4	
3	0501.10000	Acryltape Dubbelzijdig 25x60mm	
9	12.05.0.5150	Silicone T-profiel	Lengte = 0,42 mtr
10	12.05.0.5010	Silicone profiel 8mm - 60°	Lengte = 1,9 mtr
11	1003.10035	T4 Vacuumdeksel	
12	0605.00025	Klemveer siliconenhouder	

ALL DIMENSIONS IN mm TOLERANCE: According to DIN ISO 2768 Part 1-m and Part 2-K		DRAWN: P.S.		MAT :	
FORMAT: Oct 2008		DATE : 23-8-2012		DIM :	
NAME T4 Vacuumcover Long (art.nr: A4>T4)		CHECK :		FINISH:	
HFE VACUUM SYSTEMS PO Box 2261 5202 CG 's-Hertogenbosch Netherlands Phone: +31 (0)73 6 271 271 Fax: +31 (0)73 6 271 200		SCALE 1:4		FORM A3	
		ART. NR A4>T4----		REVISION SYMBOL	
REVISION HISTORY		REV		DRW. NR 13132-1	
		SHEET NR			

REV	DATE	DESCRIPTION
REVISION HISTORY		

Ownership explicitly reserved to HFE vacuum systems b.v. Multiplication in any form to third parties is not permitted without written permission of the owner.

- Dekfels vooraf controleren op beschadigingen en bij schade/krassen afkeuren i.p.v. assembleren.
- Zorgen dat de tafel vrij is van vuil en verontreiniging om beschadigingen te voorkomen.



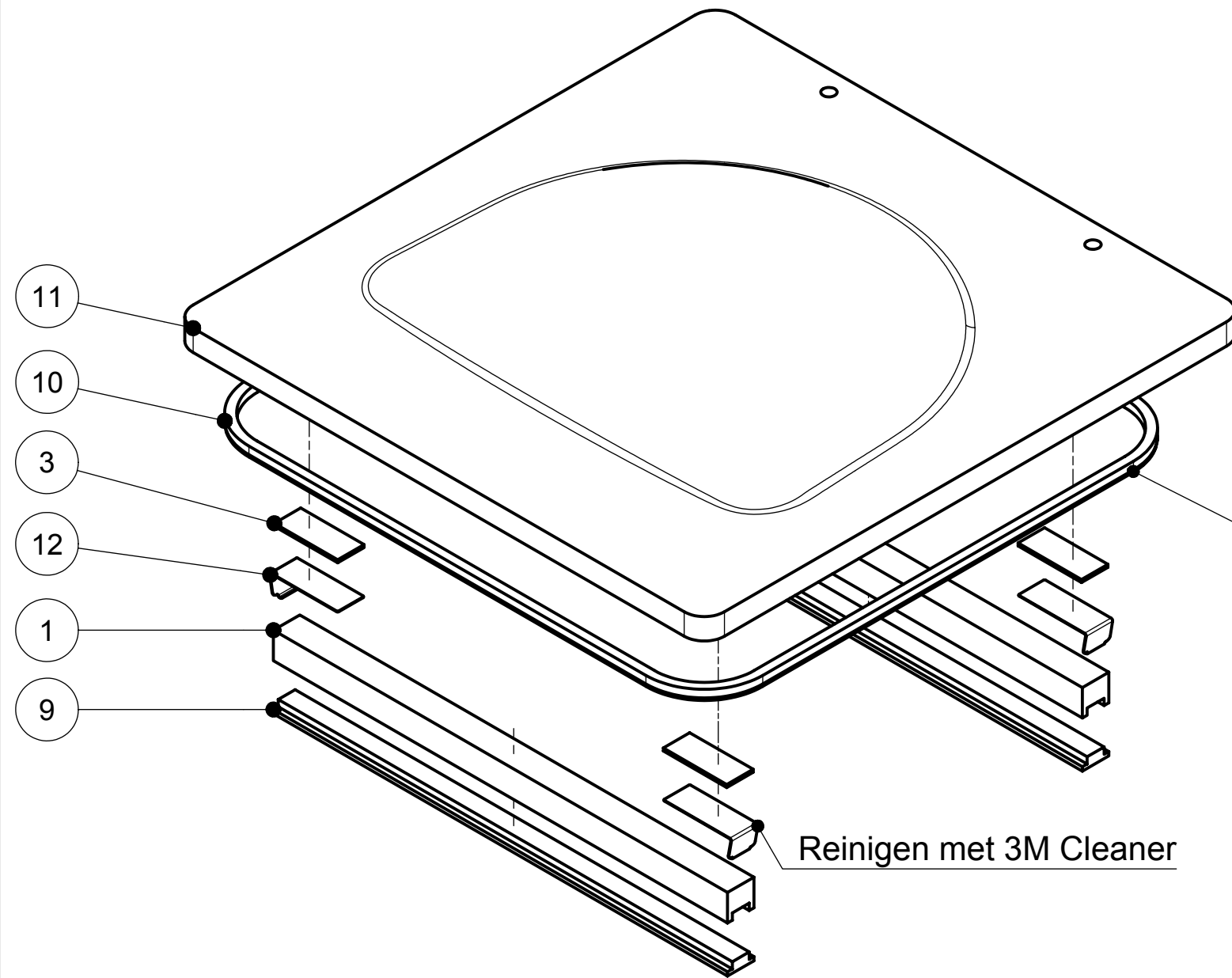
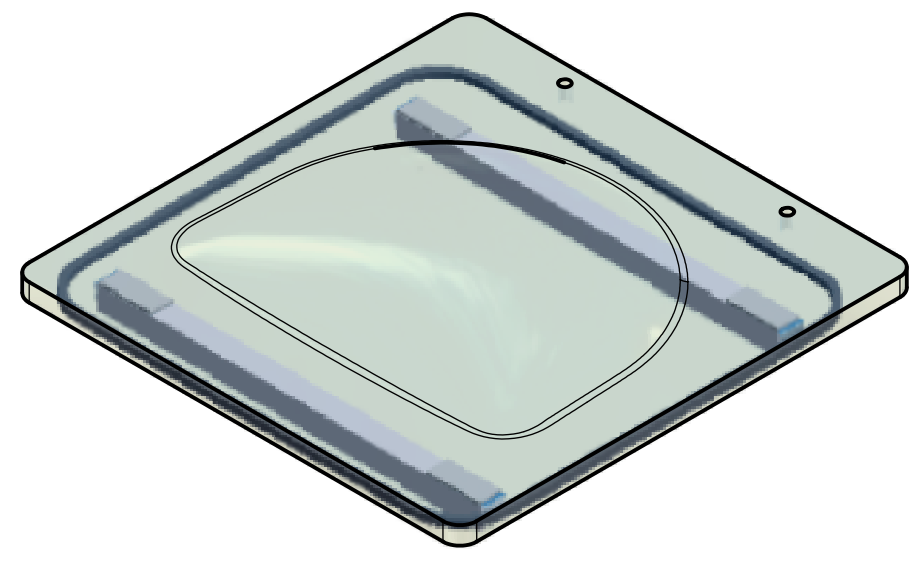
LET OP: Dekselrubber niet oprekken tijdens montage !!!

POS	ART. NR	DESCRIPTION	DRW. NR	R	MATERIAL	DIMENSIONS
2	9410.00155	Siliconenhouder T4 Gas	13057		3.3206 (AlMgSi0,5)	
3	0501.10000	Acryltape Dubbelzijdig 25x60mm			Polyaryletherketone Resin	
4	08.08.1.7010	Steun trildemper Vacuumzakhouder	59740		3.3206 (AlMgSi0,5)	
6	12.08.0.0030	Trildemper d=15 h=6 M5x10			Rubber	
7	01.20.1.0030	Washer M5 DIN 125			A2	
8	01.11.1.0050	M5 Hexagon Domed Cap Nuts DIN 1587			Steel, Mild	
9	12.05.0.5150	Silicone T-profiel			Silicone	Lengte = 0,42 mtr
10	12.05.0.5010	Silicone profiel 8mm - 60°			Silicone 60±5° Shore A	Lengte = 1,9 mtr
11	1003.10035	T4 Vacuumdeksel	13041	B	PMMA	
12	0605.00025	Klemveer siliconenhouder	13085	A	1.4310 Verenstaal RVS	
13	01.09.1.0010	M4x10 Countersunk raised head screws ISO 7047			Steel, Mild	

ALL DIMENSIONS IN mm TOLERANCE: According to DIN ISO 2768 Part 1-m and Part 2-K		DRAWN: P.S.		MAT :	
FORMAT: Oct 2008		DATE : 23-8-2012		DIM :	
NAME T4 Vacuumcover Long / Gas (art.nr: A4>T4-GAS)		CHECK :		FINISH:	
HFE VACUUM SYSTEMS PO Box 2261 5202 CG 's-Hertogenbosch Netherlands Phone: +31 (0)73 6 271 271 Fax: +31 (0)73 6 271 200		SCALE 1:4		FORM A3	
		ART. NR A4>T4----		SHEET NR	
		REV		DRW. NR 13132-2	

Ownership explicitly reserved to HFE vacuum systems b.v. Multiplication in any form to third parties is not permitted without written permission of the owner.

- Dekfels vooraf controleren op beschadigingen en bij schade/krassen afkeuren i.p.v. assembleren.
- Zorgen dat de tafel vrij is van vuil en verontreiniging om beschadigingen te voorkomen.



LET OP: Dekselrubber niet oprekken tijdens montage !!!

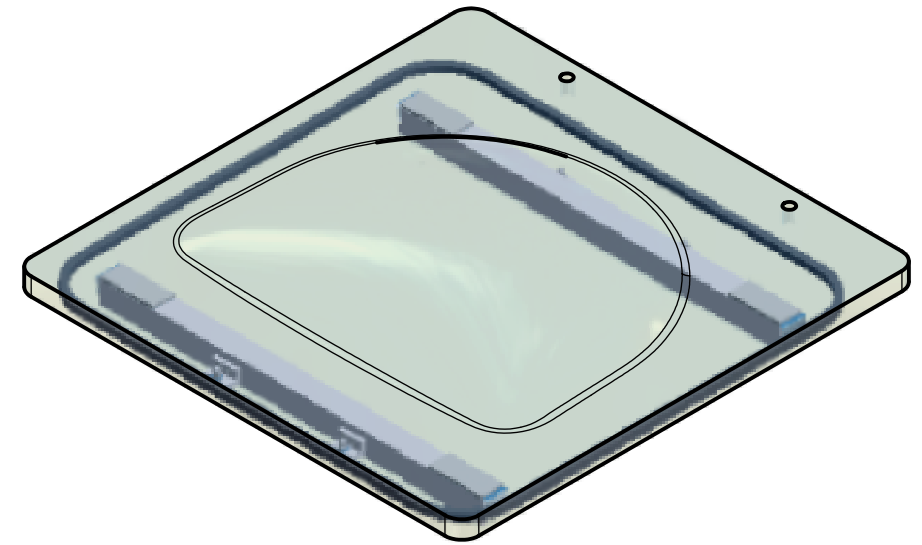
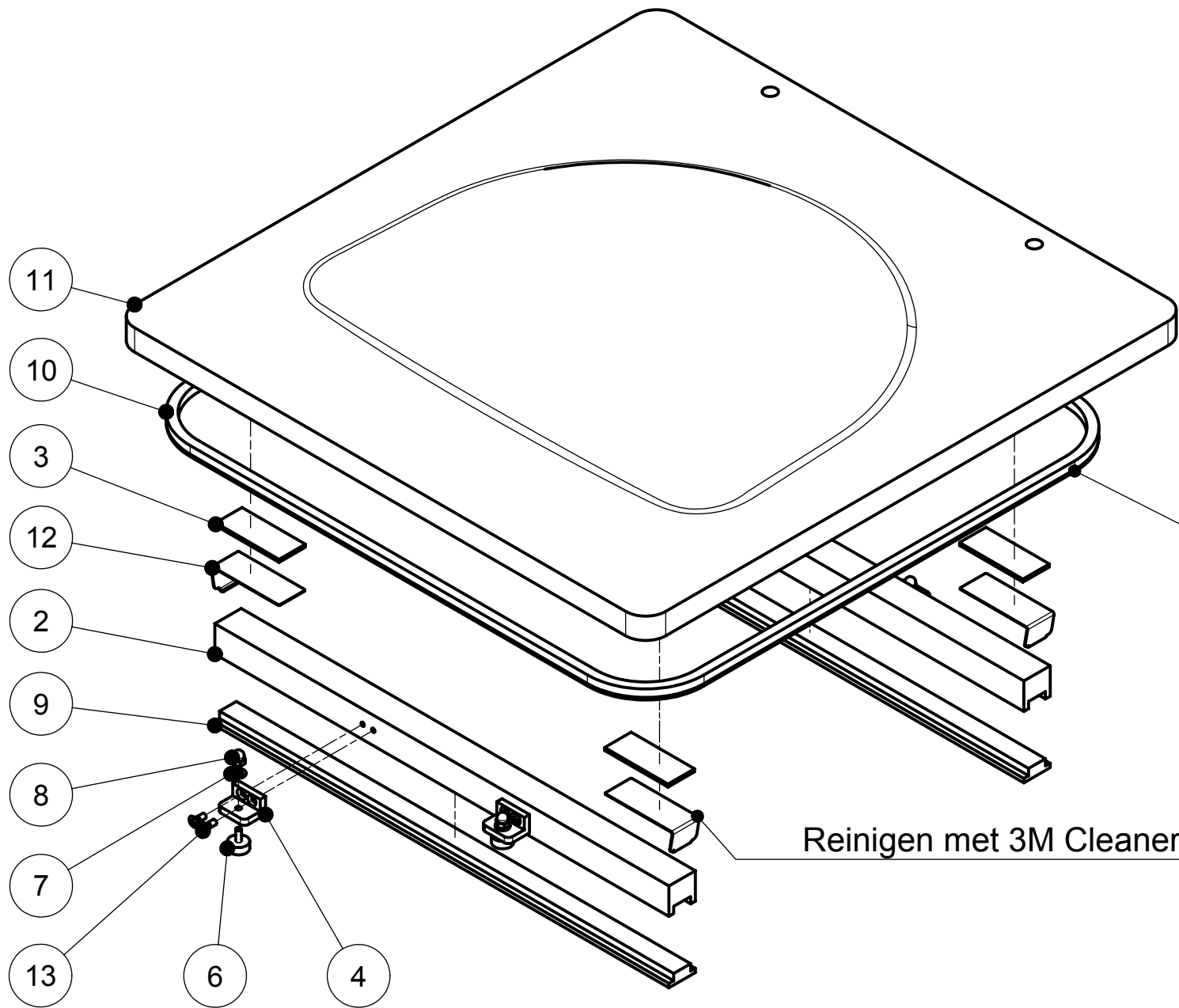
POS	ART. NR	DESCRIPTION	DRW. NR	R	MATERIAL	DIMENSIONS
1	9410.00150	Siliconenhouder T4	13056		3.3206 (AlMgSi0,5)	
3	0501.10000	Acryltape Dubbelzijdig 25x60mm			Polyaryletherketone Resin	
9	12.05.0.5150	Silicone T-profiel			Silicone	Lengte = 0,42 mtr
10	12.05.0.5010	Silicone profiel 8mm - 60°			Silicone 60±5° Shore A	Lengte = 1,9 mtr
11	1003.10035	T4 Vacuumdeksel	13041	B	PMMA	
12	0605.00025	Klemveer siliconenhouder	13085	A	1.4310 Verenstaal RVS	

Reinigen met 3M Cleaner

ALL DIMENSIONS IN mm TOLERANCE: According to DIN ISO 2768 Part 1-m and Part 2-K		DRAWN: P.S.		MAT :	
FORMAT: Oct 2008		DATE : 23-8-2012		DIM :	
NAME T4 Vacuumcover Long-Long (art.nr: A4>T4-LL)		CHECK :		FINISH:	
HFE VACUUM SYSTEMS PO Box 2261 5202 CG 's-Hertogenbosch Netherlands Phone: +31 (0)73 6 271 271 Fax: +31 (0)73 6 271 200		SCALE 1:4		FORM A3	
		ART. NR A4>T4----		REPLACES	
		REV		DRW. NR 13132-3	
		SHEET NR			

Ownership explicitly reserved to HFE vacuum systems b.v. Multiplication in any form to third parties is not permitted without written permission of the owner.

- Dekfels vooraf controleren op beschadigingen en bij schade/krassen afkeuren i.p.v. assembleren.
- Zorgen dat de tafel vrij is van vuil en verontreiniging om beschadigingen te voorkomen.

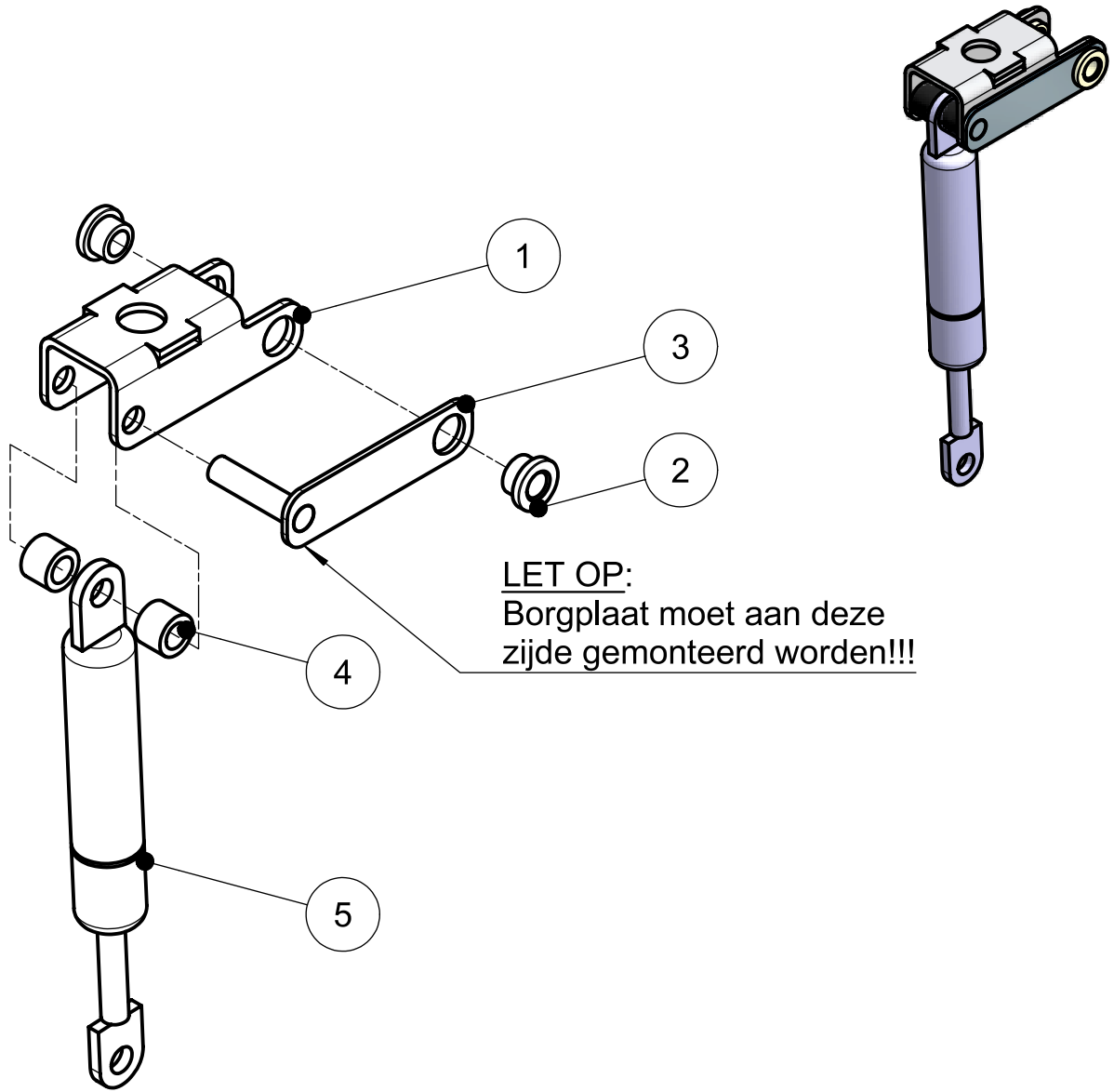


LET OP: Dekselrubber niet oprekken tijdens montage !!!

Reinigen met 3M Cleaner

POS	ART. NR	DESCRIPTION	DRW. NR	R	MATERIAL	DIMENSIONS
2	9410.00155	Siliconenhouder T4 Gas	13057		3.3206 (AlMgSi0,5)	
3	0501.10000	Acryltape Dubbelzijdig 25x60mm			Polyaryletherketone Resin	
4	08.08.1.7010	Steun trildemper Vacuumzakhouder	59740		3.3206 (AlMgSi0,5)	
6	12.08.0.0030	Trildemper d=15 h=6 M5x10			Rubber	
7	01.20.1.0030	Washer M5 DIN 125			A2	
8	01.11.1.0050	M5 Hexagon Domed Cap Nuts DIN 1587			Steel, Mild	
9	12.05.0.5150	Silicone T-profiel			Silicone	Lengte = 0,42 mtr
10	12.05.0.5010	Silicone profiel 8mm - 60°			Silicone 60±5° Shore A	Lengte = 1,9 mtr
11	1003.10035	T4 Vacuumdeksel	13041	B	PMMA	
12	0605.00025	Klemveer siliconenhouder	13085	A	1.4310 Verenstaal RVS	
13	01.09.1.0010	M4x10 Countersunk raised head screws ISO 7047			Steel, Mild	

ALL DIMENSIONS IN mm TOLERANCE: According to DIN ISO 2768 Part 1-m and Part 2-K		DRAWN: P.S.		MAT :	
FORMAT: Oct 2008		DATE : 23-8-2012		DIM :	
		CHECK :		FINISH:	
NAME T4 Vacuumcover Long-Long / Gas (art.nr: A4>T4-LL-GAS)				REM :	
				REPLACED BY	
				REPLACES	
HFE VACUUM SYSTEMS PO Box 2261 5202 CG 's-Hertogenbosch Netherlands Phone: +31 (0)73 6 271 271 Fax: +31 (0)73 6 271 200		SCALE 1:4	FORM A3	ART. NR A4>T4----	
		REV	DRW. NR 13132-4	SHEET NR	



1	0401.00055	Scharnierdeel T3	1
2	1500.00005	Glijlager 6x9x6	2
3	0400.00360	Borgplaat scharnierdeel	1
4	0199.00025	Afstandbus skiffy 6,2x10x7,5	2
5	0601.00000	GASVEER 350N MET DYN. EINDEMP	1
POS	ART. NR	DESCRIPTION	QTY

ALL DIMENSIONS IN mm
TOLERANCE: According to DIN ISO 2768 Part 1-m and Part 2-K

FORMAT: Oct 2008

NAME **Scharnierdeel T4 geassembleerd 350N**

HFE VACUUM SYSTEMS

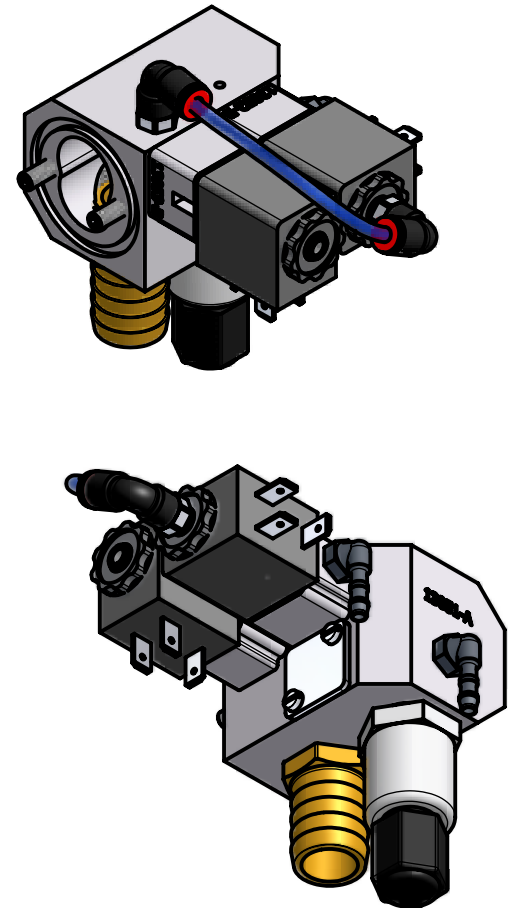
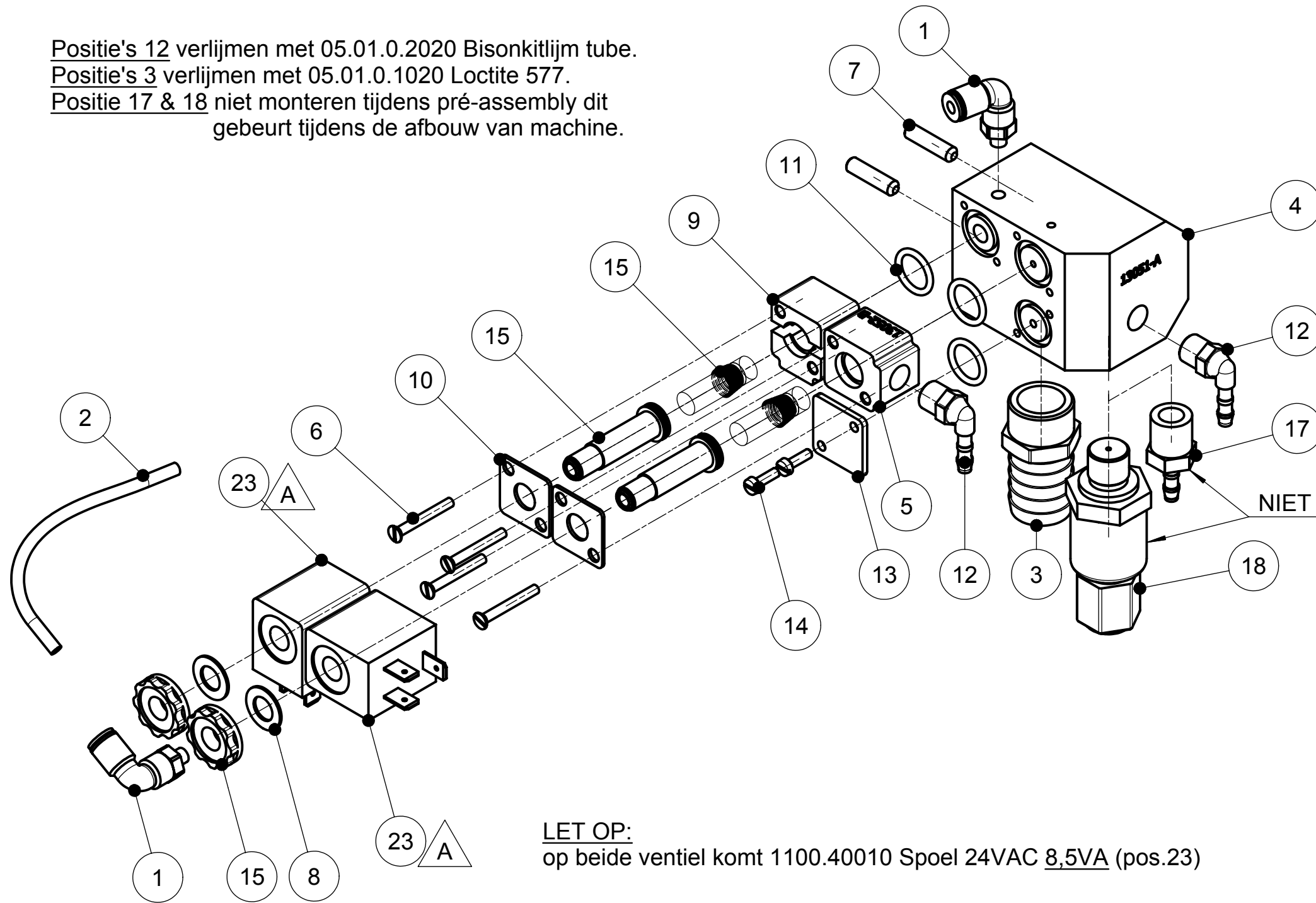
PO Box 2261
5202 CG 's-Hertogenbosch Netherlands
Phone: +31 (0)73 6 271 271
Fax: +31 (0)73 6 271 200

DRAWN: P.S. MAT :
DATE : 2-8-2012 DIM :
CHECK : FINISH:

REM :
REPLACED BY REPLACES

SCALE 1:1,5	FORM A4	ART. NR 1804.00015
	REV	DRW. NR SHEET NR 13060-4

Positie's 12 verlijmen met 05.01.0.2020 Bisonkitlijm tube.
 Positie's 3 verlijmen met 05.01.0.1020 Loctite 577.
 Positie 17 & 18 niet monteren tijdens pré-assembly dit gebeurt tijdens de afbouw van machine.



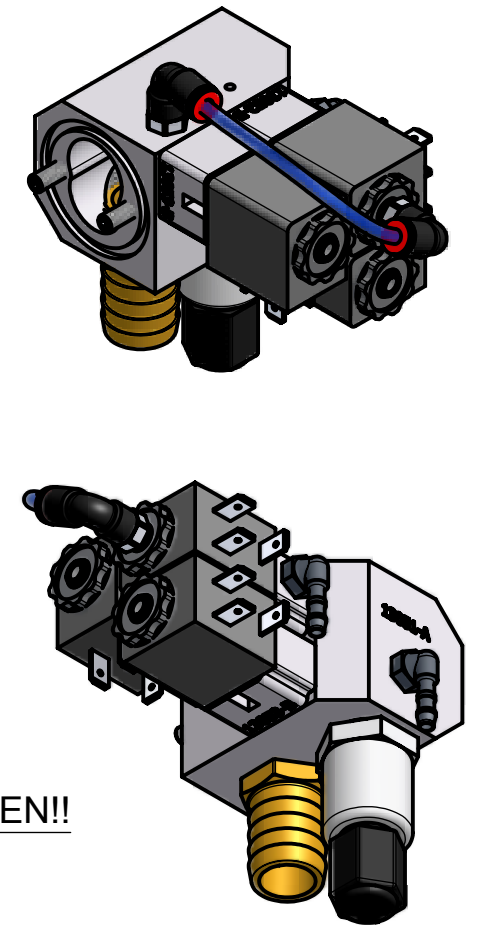
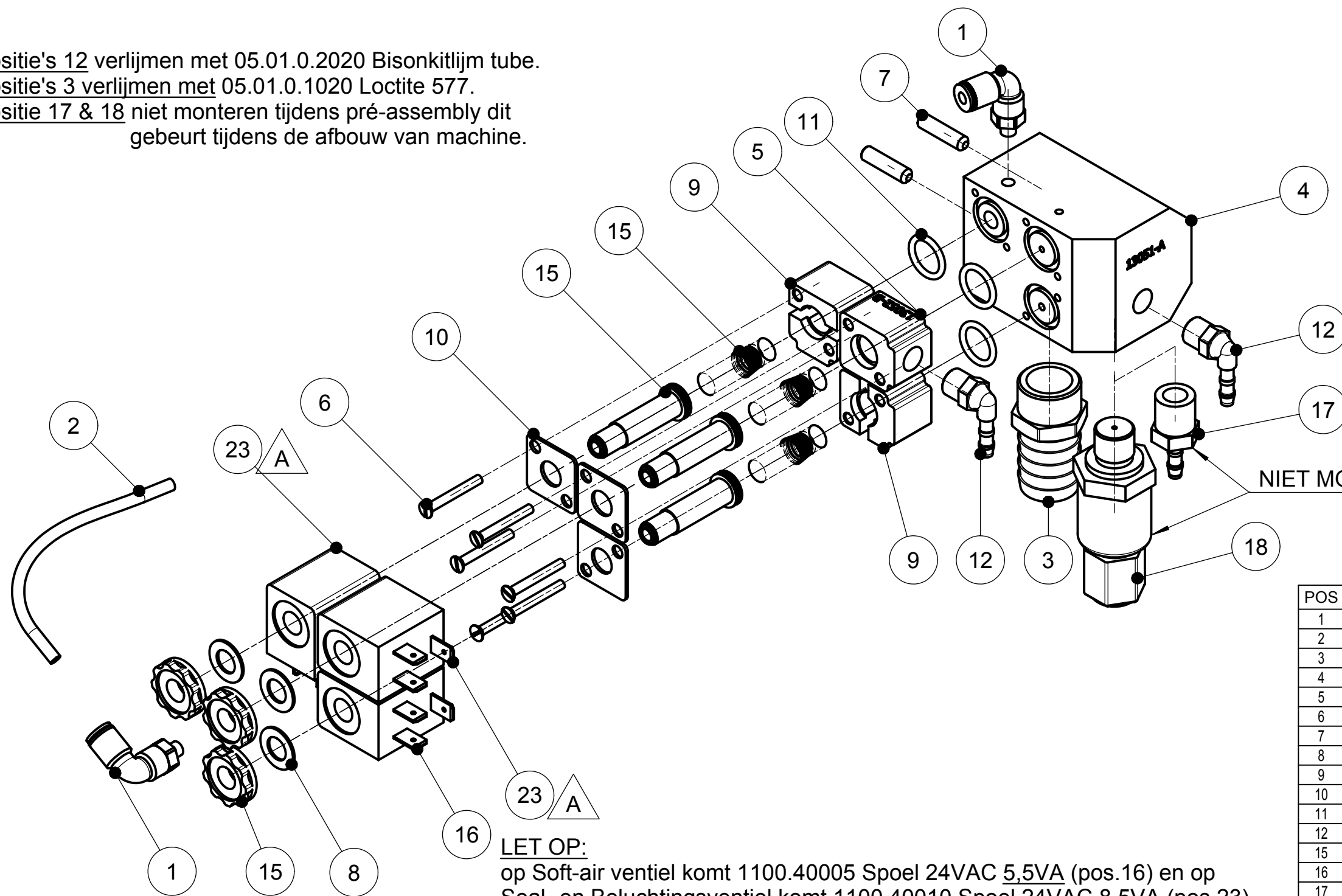
POS	ART. NR	DESCRIPTION
1	13.30.0.0270	knie M5 4mm
2	13.40.0.0480	Perslucht slang 4x2
3	0206.00050	Slangpilaar G1-2x19mm Bu
4	0804.00165	Basisblok combinatie ventiel model-I
5	0804.00175	2,5mm Adapter ventielenblok
6	0107.03025	M3 x 25 Countersunk Screw DIN 963
7	01.05.1.3020	M5x20 Hexagon Socket Set Screw DIN 916
8	0122.40050	M8 Crinkle Washer DIN 137
9	0804.00180	6mm Adapter ventielenblok
10	0401.00070	Klemplaat ventiel armatuur
11	0503.10015	O-ring 12x2mm
12	02.04.4.0010	Slangpilaar 1/8" x 4 BU H NORMA
13	0401.00075	Blindplaat combi-ventiel
14	01.06.1.1010	M3x10 Slotted Cheese Head Screw DIN 84
15	1304.00030	3-2 armatuur met 8mm seal
17	02.04.4.0065	Slangpilaar 1/4"x4 Bu Recht Norma
18	1102.90015	Vacuüm transmittor 0-1050mBar
23	1100.40010	Spoel 24VAC 8,5VA

LET OP:
 op beide ventiel komt 1100.40010 Spoel 24VAC 8,5VA (pos.23)

REV	DATE	DESCRIPTION
A	27-03-2014	Spoel t.b.v. seal- en beluchting ventiel 8,5VA & Soft-air ventiel 5,5VA
REVISION HISTORY		

ALL DIMENSIONS IN mm TOLERANCE: According to DIN ISO 2768 Part 1-m and Part 2-K		DRAWN: P.S.	MAT:
FORMAT: Oct 2008		DATE : 23-5-2013	DIM:
NAME Combination valve model-I LV, art.nr: 1805.00005		CHECK:	FINISH:
HFE VACUUM SYSTEMS PO Box 2261 5202 CG 's-Hertogenbosch Netherlands Phone: +31 (0)73 6 271 271 Fax: +31 (0)73 6 271 200		SCALE 1:1,5	FORM A3
		REV A	ART. NR 13050-1
		DRW. NR	SHEET NR

Positie's 12 verlijmen met 05.01.0.2020 Bisonkitlijm tube.
 Positie's 3 verlijmen met 05.01.0.1020 Loctite 577.
 Positie 17 & 18 niet monteren tijdens pré-assembly dit gebeurt tijdens de afbouw van machine.



NIET MONTEREN!!

LET OP:
 op Soft-air ventiel komt 1100.40005 Spoel 24VAC 5,5VA (pos.16) en op Seal- en Beluchtingsventiel komt 1100.40010 Spoel 24VAC 8,5VA (pos.23)

POS	ART. NR	DESCRIPTION
1	13.30.0.0270	knie M5 4mm
2	13.40.0.0480	Persluchtslang 4x2
3	0206.00050	Slangpilaar G1-2x19mm Bu
4	0804.00165	Basisblok combinatie ventiel model-I
5	0804.00175	2,5mm Adapter ventielenblok
6	0107.03025	M3 x 25 Countersunk Screw DIN 963
7	01.05.1.3020	M5x20 Hexagon Socket Set Screw DIN 916
8	0122.40050	M8 Crinkle Washer DIN 137
9	0804.00180	6mm Adapter ventielenblok
10	0401.00070	Klemplaat ventiel armatuur
11	0503.10015	O-ring 12x2mm
12	02.04.4.0010	Slangpilaar 1/8" x 4 BU H NORMA
15	1304.00030	3-2 armatuur met 8mm seal
16	1100.40005	Spoel 24VAC 5,5VA
17	02.04.4.0065	Slangpilaar 1/4"x4 Bu Recht Norma
18	1102.90015	Vacuüm transmittor 0-1050mBar
23	1100.40010	Spoel 24VAC 8,5VA

ALL DIMENSIONS IN mm
 TOLERANCE: According to DIN ISO 2768 Part 1-m and Part 2-K

FORMAT: Oct 2008

NAME **Combination valve model-I
 SA/LV, art.nr: 1805.00010**

HFE VACUUM SYSTEMS
 PO Box 2261
 5202 CG 's-Hertogenbosch Netherlands
 Phone: +31 (0)73 6 271 271
 Fax: +31 (0)73 6 271 200

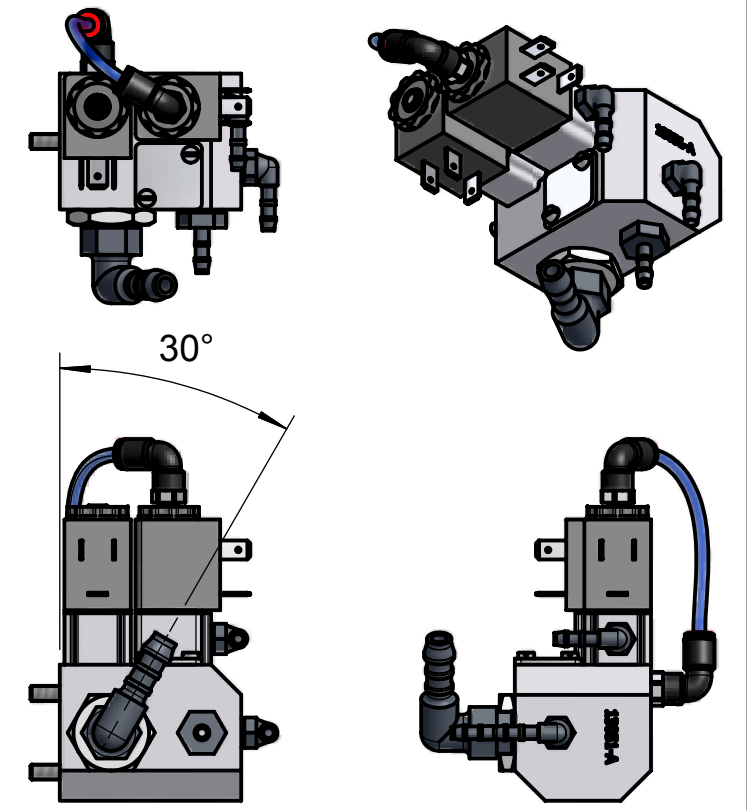
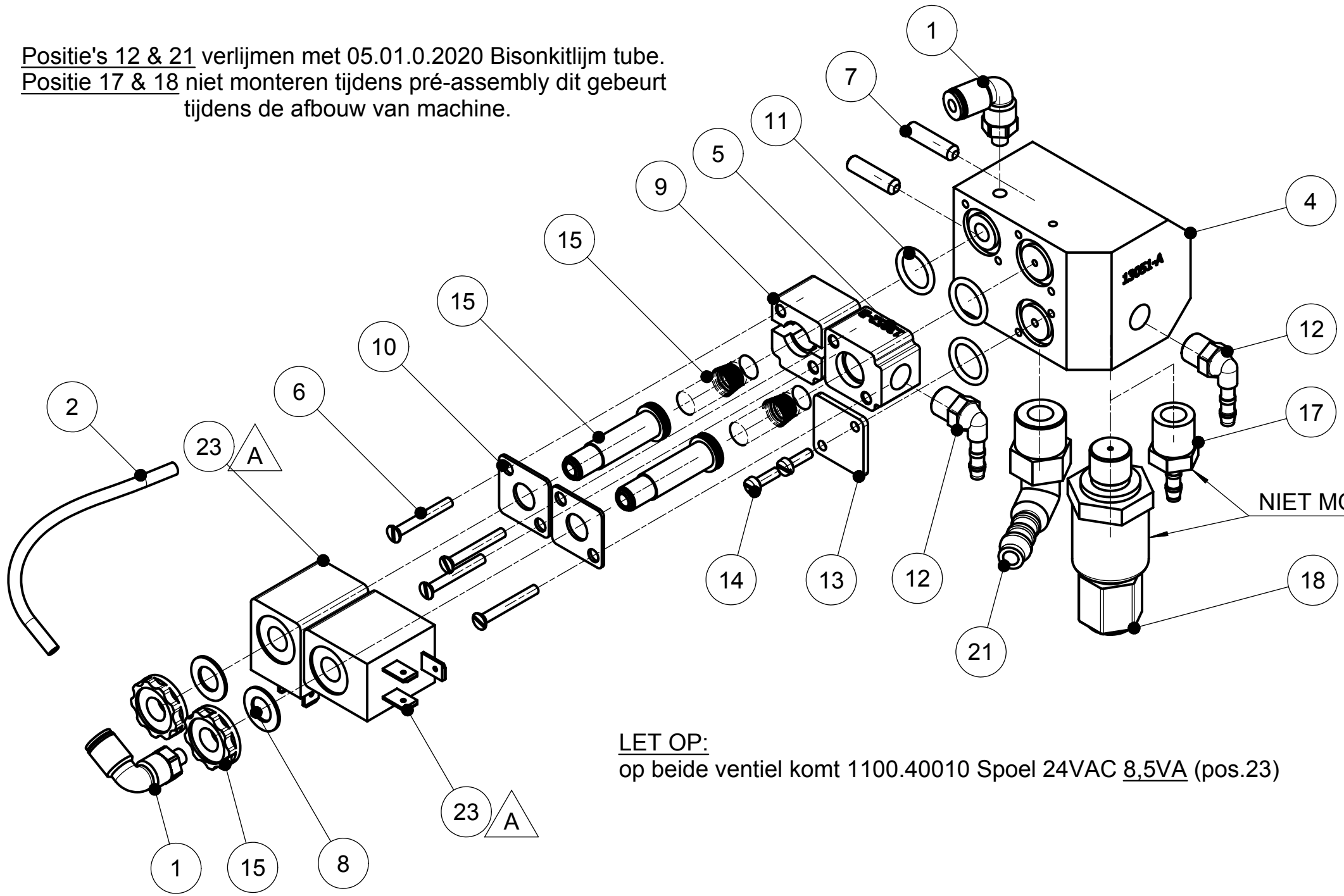
DRAWN: P.S.	MAT :
DATE : 23-5-2013	DIM :
CHECK :	FINISH:
REM :	REPLACES
REPLACED BY	REPLACES
SCALE 1:1,5	FORM A3
ART. NR	ART. NR
REV A	DRW. NR 13050-2
SHEET NR	SHEET NR

REV	DATE	DESCRIPTION
A	27-03-2014	Spoel t.b.v. seal- en beluchting ventiel 8,5VA & Soft-air ventiel 5,5VA

REVISION HISTORY

Ownership explicitly reserved to HFE vacuum systems b.v. Multiplication in any form to third parties is not permitted without written permission of the owner.

Positie's 12 & 21 verlijmen met 05.01.0.2020 Bisonkitlijm tube.
 Positie 17 & 18 niet monteren tijdens pré-assembly dit gebeurt tijdens de afbouw van machine.



LET OP:
 op beide ventiel komt 1100.40010 Spoel 24VAC 8,5VA (pos.23)

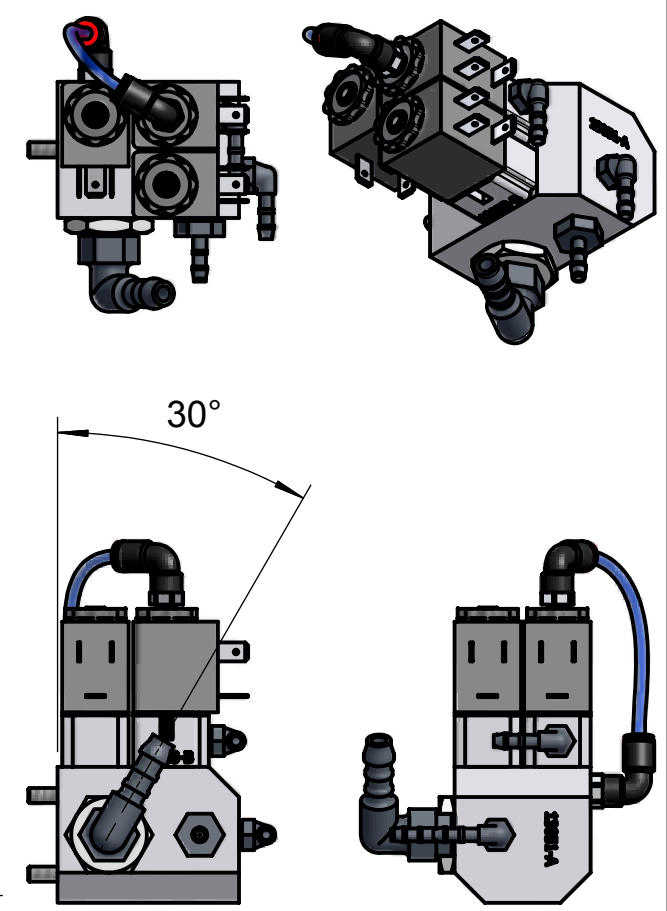
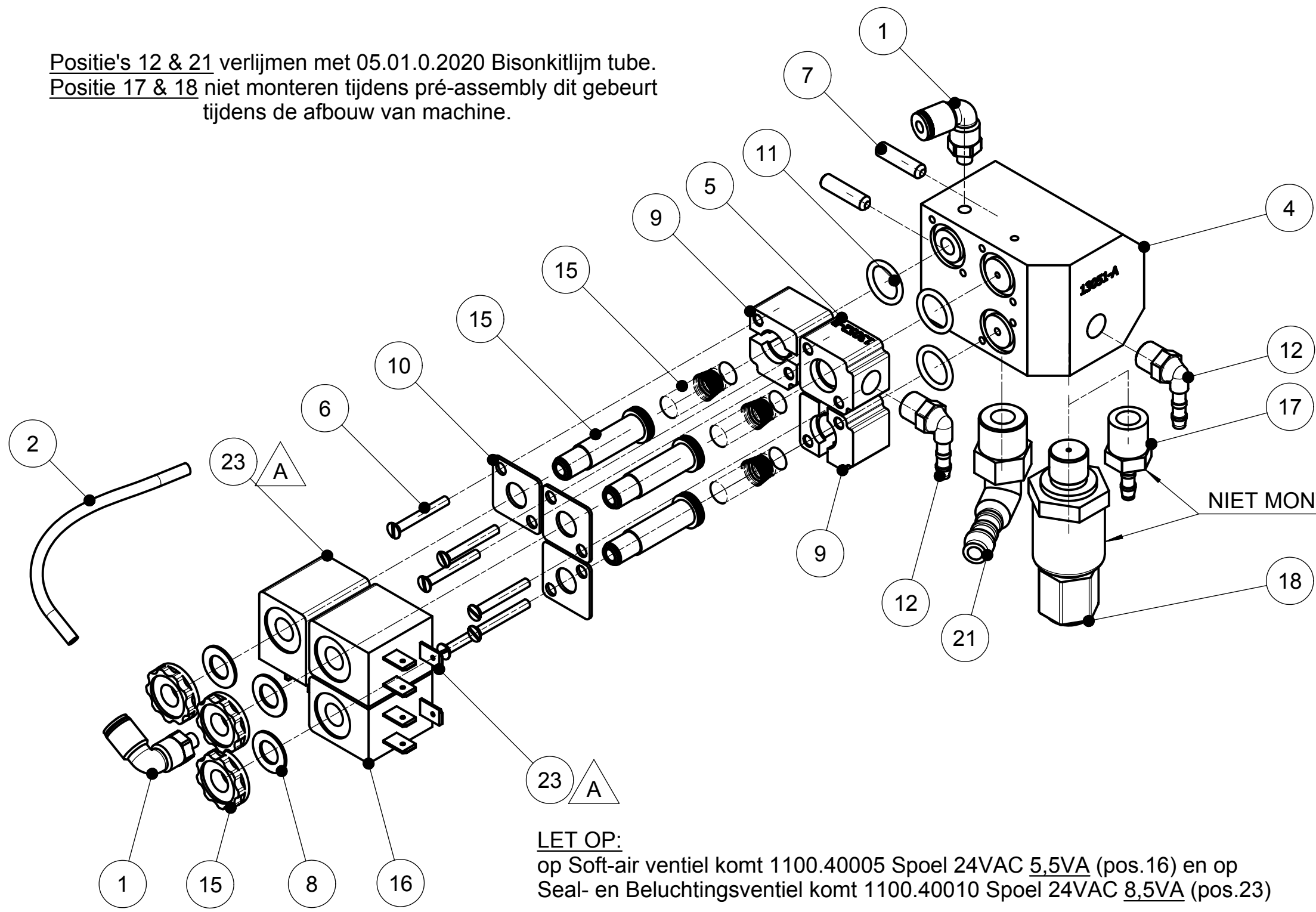
POS	ART. NR	DESCRIPTION
1	13.30.0.0270	knie M5 4mm
2	13.40.0.0480	Perslucht slang 4x2
4	0804.00165	Basisblok combinatie ventiel model-I
5	0804.00175	2,5mm Adapter ventielenblok
6	0107.03025	M3 x 25 Countersunk Screw DIN 963
7	01.05.1.3020	M5x20 Hexagon Socket Set Screw DIN 916
8	0122.40050	M8 Crinkle Washer DIN 137
9	0804.00180	6mm Adapter ventielenblok
10	0401.00070	Klemplaat ventiel armatuur
11	0503.10015	O-ring 12x2mm
12	02.04.4.0010	Slangpilaar 1/8" x 4 BU H NORMA
13	0401.00075	Blindplaat combi-ventiel
14	01.06.1.1010	M3x10 Slotted Cheese Head Screw DIN 84
15	1304.00030	3-2 armatuur met 8mm seal
17	02.04.4.0065	Slangpilaar 1/4"x4 Bu Recht Norma
18	1102.90015	Vacuum transmittor 0-1050mBar
20	02.06.3.0080	Verloopring 1 2 - 1 4
21	02.04.4.0045	Square hose coupling 3/8"x8 Norma
23	1100.40010	Spoel 24VAC 8,5VA

ALL DIMENSIONS IN mm TOLERANCE: According to DIN ISO 2768 Part 1-m and Part 2-K		DRAWN: P.S.	MAT:
FORMAT: Oct 2008		DATE : 23-5-2013	DIM:
NAME Combination valve model-I LV-8m³ Vac.pump, art.nr: 1805.00006		CHECK:	FINISH:
HFE VACUUM SYSTEMS PO Box 2261 5202 CG 's-Hertogenbosch Netherlands Phone: +31 (0)73 6 271 271 Fax: +31 (0)73 6 271 200		SCALE 1:1,5	FORM A3
		REV A	ART. NR 13050-3
REVISION HISTORY		DRW. NR	SHEET NR

REV	DATE	DESCRIPTION
A	27-03-2014	Spoel t.b.v. seal- en beluchting ventiel 8,5VA & Soft-air ventiel 5,5VA

Ownership explicitly reserved to HFE vacuum systems b.v. Multiplication in any form to third parties is not permitted without written permission of the owner.

Positie's 12 & 21 verlijmen met 05.01.0.2020 Bisonkitlijm tube.
 Positie 17 & 18 niet monteren tijdens pré-assembly dit gebeurt tijdens de afbouw van machine.



LET OP:
 op Soft-air ventiel komt 1100.40005 Spoel 24VAC 5,5VA (pos.16) en op
 Seal- en Beluchtingsventiel komt 1100.40010 Spoel 24VAC 8,5VA (pos.23)

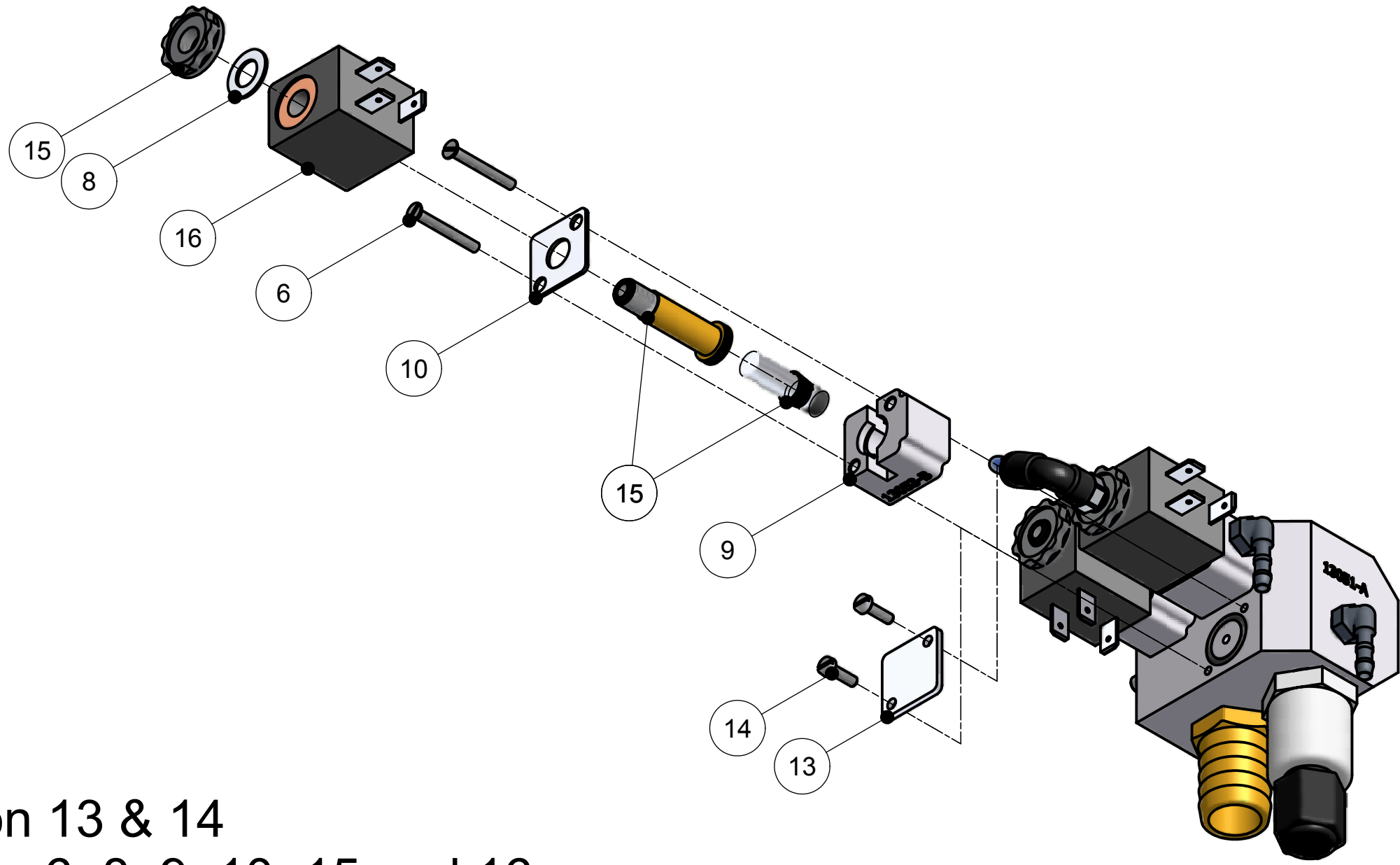
POS	ART. NR	DESCRIPTION
1	13.30.0.0270	knie M5 4mm
2	13.40.0.0480	Perslucht slang 4x2
4	0804.00165	Basisblok combinatie ventiel model-I
5	0804.00175	2,5mm Adapter ventielenblok
6	0107.03025	M3 x 25 Countersunk Screw DIN 963
7	01.05.1.3020	M5x20 Hexagon Socket Set Screw DIN 916
8	0122.40050	M8 Crinkle Washer DIN 137
9	0804.00180	6mm Adapter ventielenblok
10	0401.00070	Klemplaat ventiel armatuur
11	0503.10015	O-ring 12x2mm
12	02.04.4.0010	Slangpilaar 1/8" x 4 BU H NORMA
15	1304.00030	3-2 armatuur met 8mm seal
16	1100.40005	Spoel 24VAC 5,5VA
17	02.04.4.0065	Slangpilaar 1/4"x4 Bu Rech Norma
18	1102.90015	Vacuüm transmittor 0-1050mBar
20	02.06.3.0080	Verloopring 1 2 - 1 4
21	02.04.4.0045	Square hose coupling 3/8"x8 Norma
23	1100.40010	Spoel 24VAC 8,5VA

REV	DATE	DESCRIPTION
A	27-03-2014	Spoel t.b.v. seal- en beluchting ventiel 8,5VA & Soft-air ventiel 5,5VA

REVISION HISTORY

ALL DIMENSIONS IN mm TOLERANCE: According to DIN ISO 2768 Part 1-m and Part 2-K		DRAWN: P.S.	MAT:
FORMAT: Oct 2008		DATE : 23-5-2013	DIM:
NAME Combination valve model-I SA/LV-8m³ Vac.pump, art.nr: 1805.00011		CHECK:	FINISH:
HFE VACUUM SYSTEMS PO Box 2261 5202 CG 's-Hertogenbosch Netherlands Phone: +31 (0)73 6 271 271 Fax: +31 (0)73 6 271 200		SCALE	FORM
			A3
		REV	ART. NR
		A	13050-4
		DRW. NR	SHEET NR

Ownership explicitly reserved to HFE vacuum systems b.v. Multiplication in any form to third parties is not permitted without written permission of the owner.

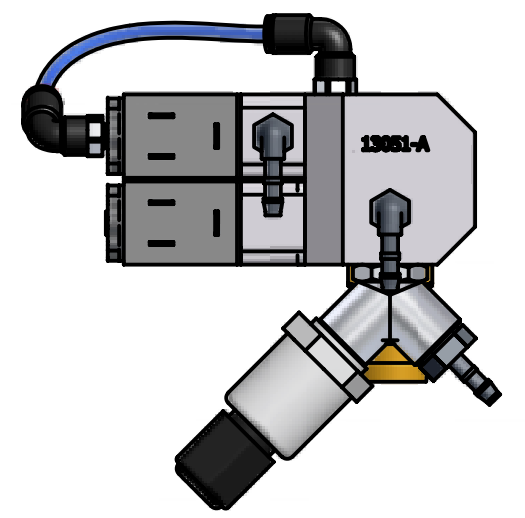
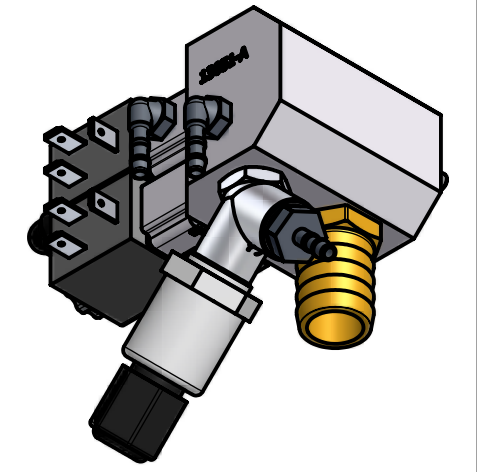
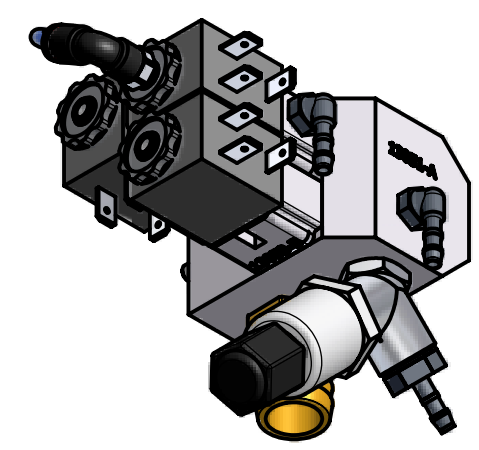
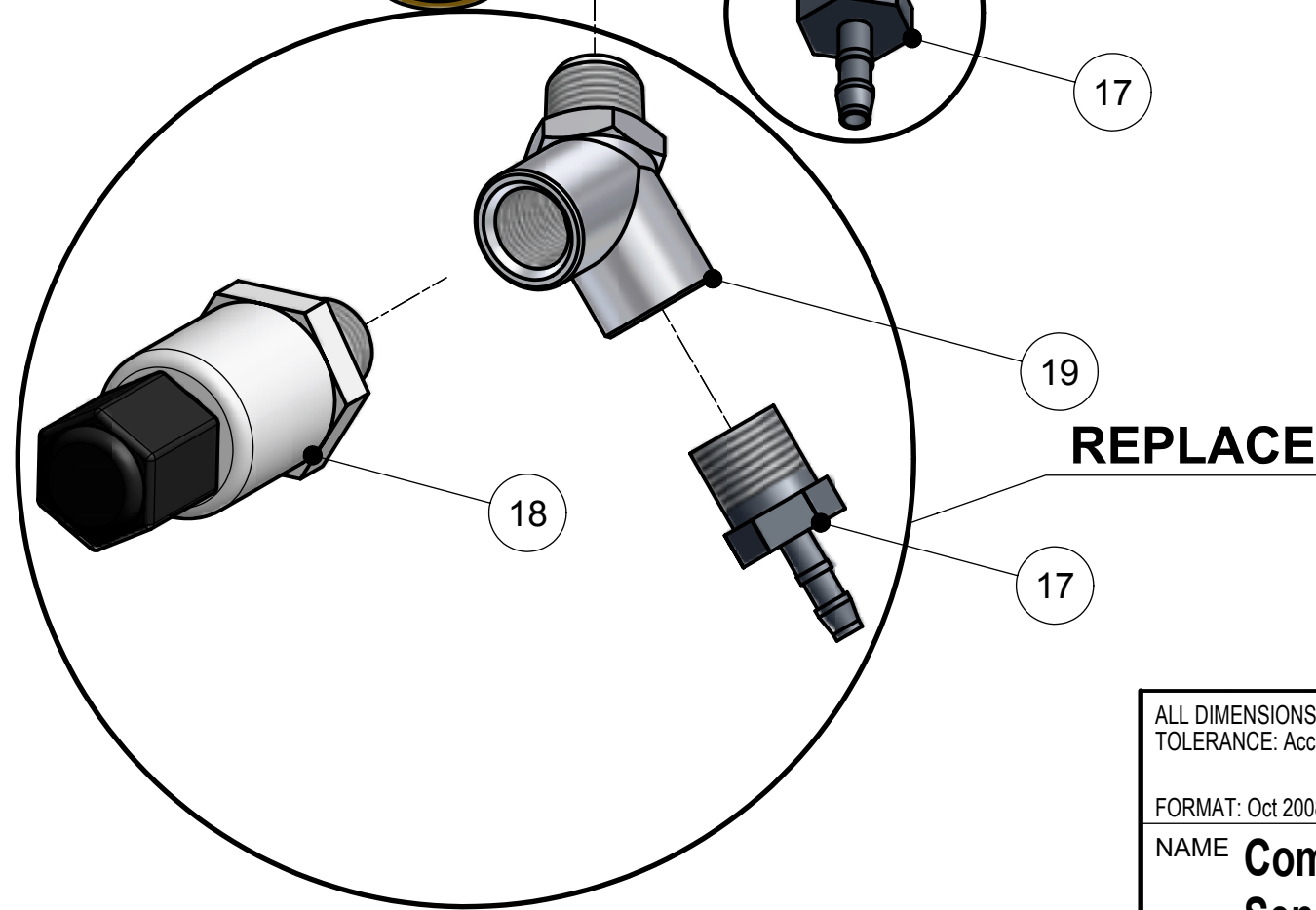
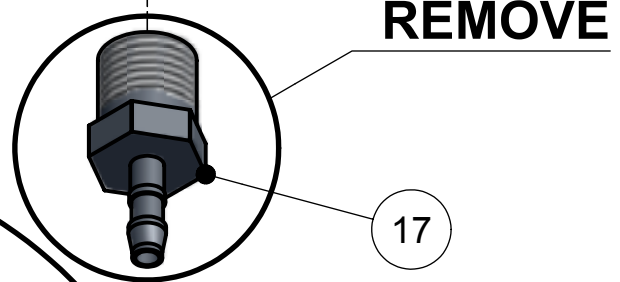
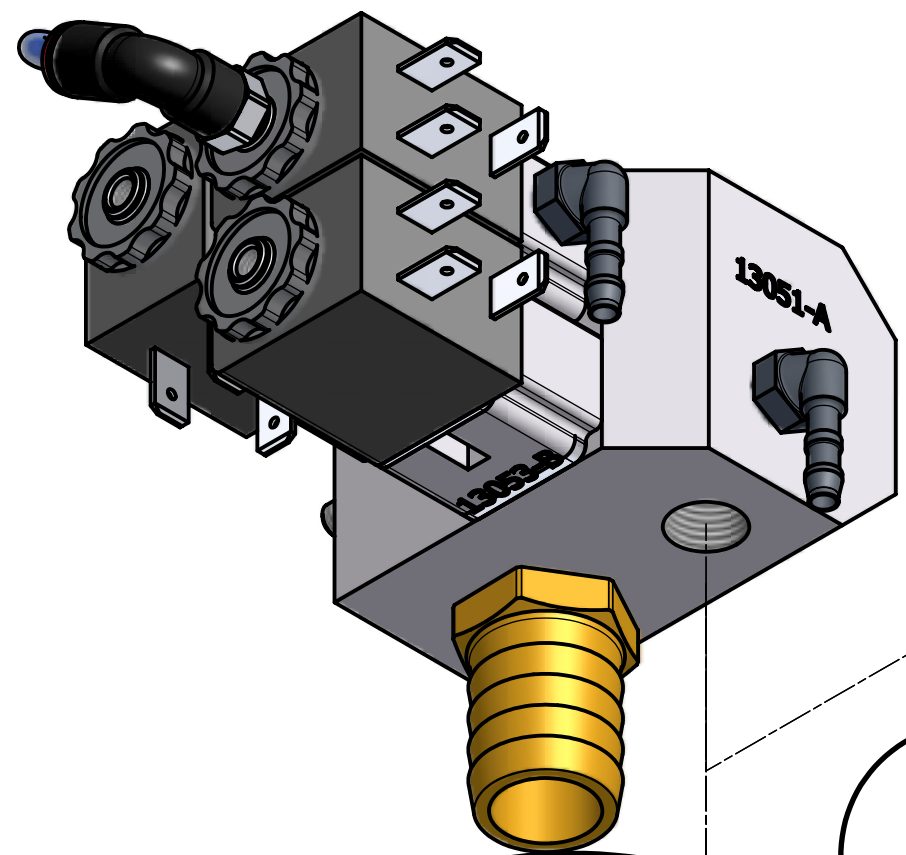


Remove position 13 & 14
 Replace position 6, 8, 9, 10, 15 and 16

POS	ART. NR	DESCRIPTION
6	0107.03025	M3 x 25 Countersunk Screw DIN 963
8	0122.40050	M8 Crinkle Washer DIN 137
9	0804.00180	6mm Adapter ventielenblok
10	0401.00070	Klemplaat ventiel armatuur
13	0401.00075	Blindplaat combi-ventiel
14	01.06.1.1010	M3x10 Slotted Cheese Head Screw DIN 84
15	1304.00030	3-2 armatuur met 8mm seal
16	1100.40005	Spoel 24VAC 5,5VA

ALL DIMENSIONS IN mm TOLERANCE: According to DIN ISO 2768 Part 1-m and Part 2-K		DRAWN: P.S.	MAT :
FORMAT: Oct 2008		DATE : 23-5-2013	DIM :
NAME Combination valve model-I Soft-air installation set (art.nr: 9702.20000)		CHECK :	FINISH:
HFE VACUUM SYSTEMS PO Box 2261 5202 CG 's-Hertogenbosch Netherlands Phone: +31 (0)73 6 271 271 Fax: +31 (0)73 6 271 200		SCALE 1:1,5	FORM A3
			REV A
		ART. NR	REPLACES
		DRW. NR 13050-5	SHEET NR

Ownership explicitly reserved to HFE vacuum systems b.v. Multiplication in any form to third parties is not permitted without written permission of the owner.



POS	ART. NR	DESCRIPTION
17	02.04.4.0065	Slangpilaar 1/4"x4 Bu Rech Norma
18	1102.90015	Vacuüm transmittor 0-1050mBar
19	0205.00005	Y-stuk 1/4 M-F-F MS VN

ALL DIMENSIONS IN mm
 TOLERANCE: According to DIN ISO 2768 Part 1-m and Part 2-K
 FORMAT: Oct 2008

DRAWN: P.S. MAT :
 DATE : 23-5-2013 DIM :
 CHECK : FINISH:

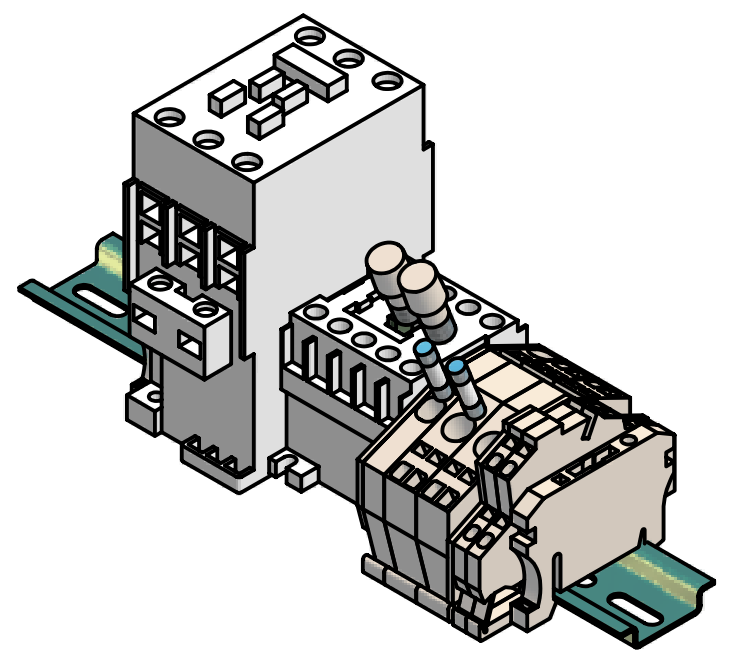
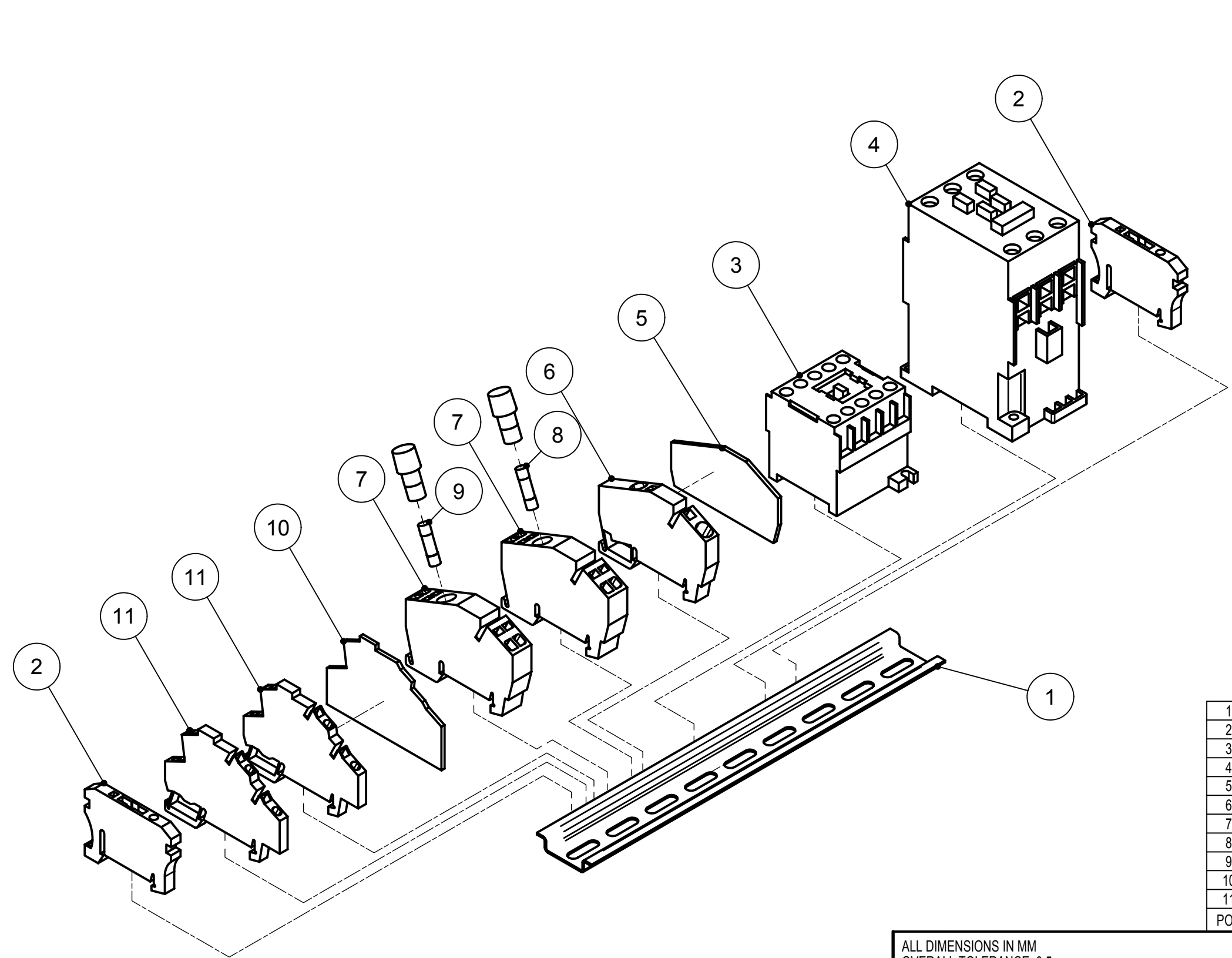
NAME **Combination valve model-I**
Sensor installation set (art.nr: 9702.10000)

REM :
 REPLACED BY REPLACES

HFE VACUUM SYSTEMS
 PO Box 2261
 5202 CG 's-Hertogenbosch Netherlands
 Phone: +31 (0)73 6 271 271
 Fax: +31 (0)73 6 271 200

SCALE **1:1** FORM **A3** ART. NR
 REV **A** DRW. NR SHEET NR
13050-6

Ownership explicitly reserved to HFE vacuum systems b.v. Multiplication in any form to third parties is not permitted without written permission of the owner.



POS	ART. NR	DESCRIPTION	QTY
1	11.06.9.9185	DIN-rail 225mm	1
2	11.06.2.0200	Eindhok ZEW TS 35	2
3	1100.22005	MAS AB100-K09KJ400 MS4P 24V 50/60HZ	1
4	11.02.0.0580	MAS AB100-C30KJ00 24VAC	1
5	11.06.2.0620	Sluitplaat ZAP ZDU 6-2	1
6	11.06.2.0360	Rijklem ZDU 6-2-2AN	1
7	11.06.2.0125	Zekeringklem ZSI 25-2x2AN-G20	2
8	11.99.0.0340/0330	Zekering 5x20mm 4 Amp Traag / 8 Amp Traag	1
9	11.99.0.0440	Zekering 5x20mm 2,5Amp. Traag	1
10	11.06.2.0630	Sluitplaat ZAP/TW ZDK 2,5-2	1
11	11.06.2.0425	Etageklem ZDK 2,5-2	2

REV	DATE	DESCRIPTION
A	13-11-2013	Positie van Etageklem ZDK 2,5-2 (pos.11) is gewijzigd
B	7-1-2014	11.02.0.0580 toegevoegd & 09.08.0.1120 doorverbinder MAS 100M09 vervallen

REVISION HISTORY

ALL DIMENSIONS IN MM OVERALL TOLERANCE: 0,5mm		DRAWN: P.S.	MAT:
FORMAT: November 2005		DATE : 15-5-2013	DIM:
NAME DIN RAIL D 1fase T3 en T4 (8/16/21m³-100/240V)		CHECK:	FINISH:
HFE VACUUM SYSTEMS PO Box 2261 5202 CG 's-Hertogenbosch Netherlands Phone: +31 (0)73 6 271 271 Fax: +31 (0)73 6 271 200		REPLACED BY	REPLACES
		SCALE 1:2	FORM A3
		ART. NR 1103.20125	
		REV B	DRW. NR 13093 -1
			SHEET NR